

Can the Left and Right Ever Agree on Redistribution?

Globalization Shocks and Bipartisan Solutions

Stephen Chaudoin Nita Rudra

Harvard University Georgetown University

with Kevin Troy

Anthropic

This draft: February 27, 2026*

Abstract

Conventional wisdom holds that partisan polarization dooms the prospects of redistribution in the United States, largely because conservatives hold negative views of the government. We argue that globalization weakens this opposition, but only for certain redistribution policies. The perceived harms of globalization increase bipartisan support for social investment, like education spending, which promises to strengthen the present and future workforce. By contrast, conservatives remain opposed to social assistance programs, such as unemployment benefits and cash aid. The contrasting views of social investment and assistance reflect how many Americans view globalization as undermining the meritocratic foundations of the “American Dream.” Social investment is seen as restoring the link between hard work and success, whereas social assistance is not. Using nationally representative survey experiments, we show that prompts about globalization boost support for social investment, especially among conservatives. But those prompts do not increase support for social assistance. We complement this with observational data on education spending at the local level from 1992-2022. The areas hardest hit by trade shocks – *both* Republican and Democratic counties – increased education spending at higher rates, despite fiscal pressures from trade shocks. Our findings suggest that partisan divides over redistribution are surmountable, and that the United States need not remain confined to protectionism, piecemeal industrial policy, and lackluster support for workers.

*We thank Ryan Brutger, Jeff Frieden, Chase Harrison, Taeku Lee, Ed Mansfield, Yotam Margalit, Ron Rogowski, Omer Solodoch, and audiences at the 2023 MPSA, and 2024 APSA conferences, Georgetown Research Seminar, and the Alexander and Diviya Magaro Peer Pre-Review Program for their feedback. Joshua Anumolu, Niccolo Bonifai, Amar Boparai, Srujana Illa, and Hashem Krayem all provided excellent research assistance.

1 Introduction

Partisan polarization often impedes efforts to expand redistribution policies in the United States. The divide runs deep and has been stubbornly resistant to compromise. Do globalization shocks provide a pathway through the deadlock? Many policymakers sound the alarm about the harmful effects of globalization on American workers. They blame import competition, especially from low-wage economies like China, for long-lasting damage to U.S. jobs, resulting in significant economic dislocation in certain regions. Political economy research underscores the critical role of redistribution policies in mitigating such economic harm. Without sufficient redistribution, the perceived economic harm can bolster support for populist movements, lowering support for democratic values, social cohesion, and global cooperation. However, scholarly work and the general sentiment of the current moment maintains that U.S. policymakers have faltered in this regard. Any remedy, beyond tariffs and industrial policy, has purportedly been sidelined, with experts pointing to partisan conflict as a key barrier.¹

Yet shifting the focus away from national-level policies to local spending, data on U.S. counties reveal an interesting trend: spending on a type of redistribution – education spending - has steadily increased in both left-leaning and right-leaning localities since the early 2000s. Redistribution policies typically fall into two categories: social investment, which promotes equal opportunity, such as by equipping individuals with skills and education to meet future labor market demands; and social assistance, which ensures equality of outcome through immediate, means-tested support like cash transfers. Education spending is one of the central pillars of social investment.

Figure 1 shows the annualized percentage change in education spending (primary, secondary, adult, and vocational), at the commuting zone level from 1992 to 2022.² The horizontal axis shows a simple measure of the partisan leaning of each commuting zone: the two-party vote share for the Democratic Presidential candidate in the 1992 election. Total education spending increased by an average of 3.3 percent per year between 1992 and 2022. What stands out about Figure 1 is

¹Eg Alesina, Stantcheva and Teso (2018) and Di Tella and Rodrik (2020).

²Commuting zones are geographical areas comprised of one or more counties. They capture areas where people live and work. Data described in greater detail below.

that rising social investment is evident in commuting zones comprised of counties from *across the political spectrum*. The average annualized percent change in education spending was 3.4% for “Democratic” commuting zones (those whose counties voted for the Democrat in every Presidential election since 1992) and 3.7% for “Republican” commuting zones. These trends have been somewhat obscured by the fact that the bulk of existing research focuses on examining redistribution patterns at the national level. Attention to local trends is important, however, since the intensity of globalization’s effects varies geographically and a significant proportion of revenue-collection and political demands for social investment are made at the local level.

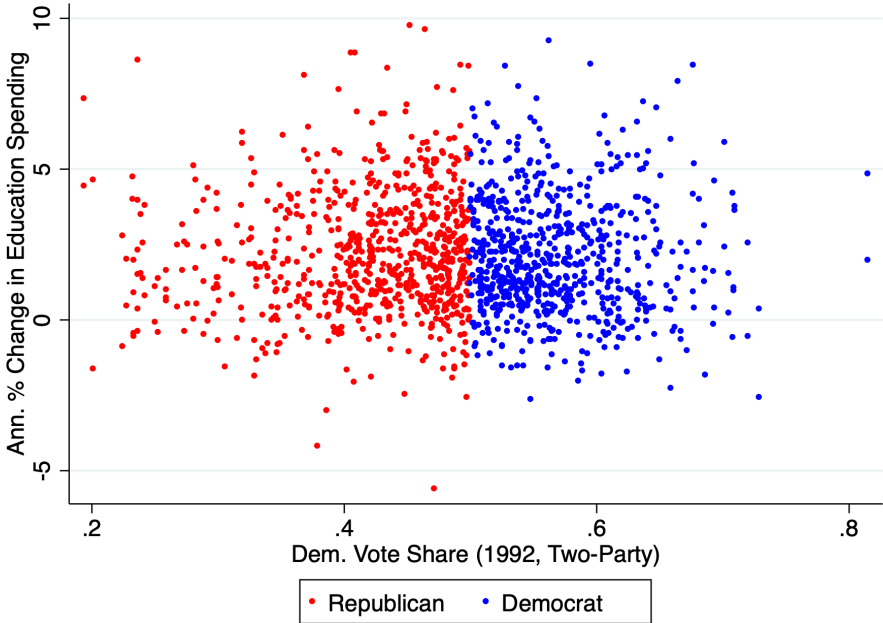


Figure 1: Annualized Percent Change in Education Spending, 1992-2022, versus 1992 Two-Party Democratic Vote Share

To make sense of this intriguing pattern, we examine the conditions under which the deep partisan divide over redistribution can be overcome. Our first intuition is that many Americans associate globalization with the decline of meritocracy. The heightened media and political focus on the China Shock, massive job losses, and a narrative that "globalization is unfair," have amplified public concerns that hard work no longer leads to success, particularly for working-class families. As more politicians blame globalization for declining upward mobility of hard-working

Americans, many voters increasingly feel that working-class families who participate in the labor market are being left behind in the global economy. The general sentiment is that the only political solutions that can attract any modicum of bipartisan support are tariffs and industrial policy.

We argue, however, that perceived harm from globalization increases support for social investment, but not for social assistance. Social investment in working class families encounters fewer political headwinds because it speaks directly to rebuilding meritocracy and the principle of "equal opportunity," repairing the damage that globalization is perceived as having done to the American Dream. Investment in higher-quality education and worker training restores the link between learned skills and access to labor-market opportunities that are not easily undercut by foreign labor. Social assistance, on the other hand, receives less support because it does not address the perceived harms of globalization.

We focus particularly on the role of conservatives, who scholars expect are most resistant to social investment. We contend that, alongside liberals, conservatives will also view social investment favoring working class families as a solution to globalization. The bulk of welfare research to date suggests that conservatives are largely unresponsive to calls for *increasing* social investment-type redistribution spending, regardless of the specific form it takes. Yet, when trade shocks are perceived to break the link between hard work and success, we argue that conservatives become more supportive of social investment aimed at restoring a level playing field for working class families. In contrast, social assistance policies remain politically unpalatable to conservatives, who view such benefits as aiding those unwilling to work.

We test our predictions – that (1) social investment garners stronger support than social assistance as a response to globalization, and (2) this support is bipartisan – in two ways. We first use survey experimental data to assess citizen and partisan demand for social investment versus social assistance in response to globalization shocks. In separate, large survey experiments (N = 3,070 and N = 4,183), we show that - at the individual level - Americans prefer social investment as a response to globalization, but not social assistance. We randomly assign respondents to a prompt asking them to write about the effects of globalization or to a control group that did not receive any

prompt. Written responses to the prompt, from both liberals and conservatives, strongly emphasize negative effects. We then ask respondents about their support for social investment and social assistance expansion in response to globalization. Consistent with our first hypothesis, the globalization treatment significantly increases support for social investment, but not social assistance. Consistent with our second hypothesis, we show that this pattern is apparent among conservative/Republican respondents.

We then use observational data to assess whether such preferences impact the supply of local social investment policies. To do so, we analyze if import competition affected local education spending (K-12, adult, and vocational) at the commuting zone level. We focus on local government responses because the effects of imports vary substantially at the local level. This is also a relevant place to look for any corresponding changes in spending, since a substantial portion of education spending is collected and distributed at the local level.

We find that local investment in education increased more in communities that faced steeper import competition. This pattern is again apparent in localities across the political spectrum. The areas hardest hit by trade shocks, both Democratic and Republican counties, increased education spending at higher rates, compared to less affected counties. This pattern is not present for other types of spending, such as police and fire spending. Our finding that localities most affected by globalization increased education spending at a faster rate than less-affected counties is especially striking, because import-competition shocks make additional spending harder.

Our broader contribution is to challenge the prevailing belief among scholars, the media, and the public that U.S. partisan politics leave little room for redistribution. We find that bipartisan support for redistribution in support of working-class families can, in fact, emerge in response to economic shocks – especially when people perceived the shock as challenging meritocracy. By conducting two original survey experiments and analyzing county-level fiscal data, we find evidence of a bipartisan preference for increasing social investment for working class families left behind by globalization. This is a novel finding because it shows a ray of optimism that U.S. politics can accommodate responses to shocks that are not simply attempts to "backpedal" against

globalization with ever-increasing tariffs.³ Even though existing work has predominantly focused on the negative economic and political effects of import competition,⁴ social investment represents a politically feasible way forward.

This stands in stark contrast with a well established pattern in the welfare spending literature that conservatives maintain strong opposition to expanding government spending, particularly when it involves redistribution, including through public schools. We contribute to the this literature by identifying the conditions under which conservatives are more likely to change their stance on redistribution and expanding our understanding of partisan dynamics in a changing economy.

2 The left and right divide over redistribution

Existing research across disciplines and subfields suggests that partisan polarization over redistribution is deeply rooted and difficult to overcome. According to redistribution scholars, the partisan divide stems from core differences in liberal and conservative values.⁵ Liberals tend to prioritize equity and equality, viewing redistribution as a necessary tool to help disadvantaged groups overcome structural barriers. In contrast, conservatives attribute poverty and joblessness to individual choices and behaviors, emphasizing personal responsibility and viewing success as the result of hard work and discipline.

Studies also find that conservatives' deep preference for limited government reinforces their reluctance to back most redistribution policies.⁶ Experimental cues about rising inequality, declining inter-generational mobility, and proposing redistribution policies that are consistent with limited government scarcely budge conservative opposition to greater redistributive spending.⁷ Their resistance to social investment-oriented policies is also reflected in lower support for public education spending relative to their liberal counterparts.⁸ Indeed, U.S. public opinion data reveals

³Chaudoin and Mangini (Forthcoming).

⁴Autor, Dorn and Hanson (2013, 2021); Rodrik (2017); Autor et al. (2020).

⁵Allan and Scruggs (2004); Piketty (1995); Kuziemko et al. (2015).

⁶Alesina, Stantcheva and Teso (2018); Rudolph and Evans (2005).

⁷Alesina, Stantcheva and Teso (2018); Culpepper et al. (2025).

⁸Karatekin et al. (2023); Favero and Kagalwala (2025); Alesina, Stantcheva and Teso (2018).

a stable and sizable gap between conservatives and liberals on various questions regarding their redistribution preferences through the 1980s, 1990s and 2000s.⁹

Certain caveats exist, but they have been short-lived or occurred under unique historical circumstances. For example, Margalit (2013) finds that the Great Recession led conservatives experiencing personal hardship to support redistribution, but this effect was temporary. Some Democrat-led redistribution programs, like the Affordable Care Act, met fierce initial resistance from Republicans. But "path dependence" led these programs to become entrenched and even defended by conservatives once they became beneficiaries.¹⁰ Social Security and Medicare are additional examples of redistributive policies that have received conservative acceptance post-implementation. Conservatives have also supported vocational education, though they became increasingly skeptical of these programs in the 1980s. The broader pattern nonetheless persists; even for these programs, conservatives generally resist efforts to increase spending on redistribution policies.

Petersen et al. (2011) is another important exception. They observe that deservingness cues can shrink partisan gaps on redistribution. Simply put, conservatives may support redistribution policies when they perceive certain groups as more "deserving" of government assistance than others. For example, conservatives are more willing to support redistribution policies for the elderly and veterans, but not able-bodied unemployed working-age adults. Because the former are now unable to work, they are perceived as deserving.¹¹ Following Petersen et al. (2011), it is possible that economic conditions might change conservative perceptions of working-class families as deserving of public assistance. If the meritocratic ideal that hard work leads to success no longer holds, then conservatives may view working-class families as more deserving of redistribution.

2.1 International Market Exposure and Redistribution Preferences

Are trade shocks an economic condition that can generate bipartisan support for certain types of redistribution? A rich literature in comparative and international political economy shows that

⁹Pew Research Center (2012).

¹⁰Pierson et al. (1997).

¹¹Petersen et al. (2011).

greater exposure to international markets increases demand for redistribution in advanced industrialized nations, but partisan cleavages persist.¹² Their findings reflect the post-war Bretton Woods compromise of "embedded liberalism" (EL), a term coined by John Ruggie (1982). It is based on the post-World War II economic framework that combines open international markets with national social welfare policies. EL is the understanding among rich democracies that governments should pursue free trade and globalization while protecting citizens through government interventions to manage the social and economic disruptions caused by global market forces.

However, many of these same studies find that the left-right divide over redistribution either remains steady in the presence of globalization or blunts support for redistribution; and that conservative parties consistently prefer relatively less redistribution in response to greater economic openness.¹³ Additionally, the bulk of this research analyzes whether international market exposure changes demands for *social assistance*, such as unemployment benefits and income support, rather than social investment, and its focuses on the period ending in the 2000s.

While a few scholars include spending on social investment programs in their research, we still have limited knowledge on how globalization shocks influence social investment policies at the *local* level.¹⁴ In the United States, local governments determine and finance many social-investment programs like education or workforce development, as well as other types of spending such as police and fire services, public housing, and parks and recreation. Shifts in these budgets could reveal how globalization reaches down to community redistribution politics.¹⁵ In one study of sub-national spending, Autor, Dorn and Hanson (2019) show that import competition with China has led to increased applications for social security and welfare benefits among the unemployed.

¹²Burgoon (2001); Benarroch and Pandey (2012); Martin and Brady (2007); Brady, Beckfield and Seeleib-Kaiser (2005); Garrett (1998); Potrafke (2012); Rickard (2015); Cameron (1978); Scheve and Slaughter (2004); Walter (2010); Hays, Ehrlich and Peinhardt (2005). See Marshall and Fisher (2015); Busemeyer (2009); Jahn (2006); Dreher, Sturm and Ursprung (2008) for evidence of a limited effect of globalization on redistribution.

¹³Garrett and Mitchell (2001); Herwartz and Theilen (2014); Haelg, Potrafke and Sturm (2022); Burgoon (2001); Garrett (1998).

¹⁴For example, Burgoon (2001) differentiated the theoretical effects of globalization on demands for short- and longer-term responses, testing predictions with aggregated spending categories. See also Rodrik (1998). Busemeyer and Garritzmann (2019) analyzes cross-national variation in trade openness and support for unemployment assistance and education spending in surveys conducted in 17 OECD countries, including the United States. They find that more trade is associated with increased support for the latter, but not the former.

¹⁵Krueger and Xu (2015).

However, their analysis posits that this is simply an economic reaction to higher layoffs, and these are national-level benefits.

Feler and Senses (2017) stands apart from this literature. They empirically investigate the effects of the China shock on many types of local level expenditures and outcomes, from 1990-2007. They find that the China shock reduced the capacity of governments to invest in public goods due to the economic devastation it has had on local communities. This is primarily because the China Shock reduced property and sales tax revenues in hard hit areas, and in turn, forced governments to cut back spending. Now, however, given that almost two decades have passed and many local governments may have recovered from the China shock, it is important to reassess the relationship.¹⁶

In sum, whether or not exposure to globalization increases demands for certain types of redistribution at the local level, remains an open question. This question is even more intriguing given that recent scholarship posits that local politics reflects the same partisan polarization as that which exists on the national level.¹⁷ Both Hopkins (2018) and Abrajano and Alvarez (2005) find that partisan polarization at the local level reflects national-level polarization on the same issues, driven by the increasing proliferation of national media sources.¹⁸

¹⁶Bonifai et al. (2024) for instance find that the effect of import competition from China on manufacturing employment has been declining since 2011. Our time period of coverage includes and expands beyond the most intense phase of the China shock, according to Autor, Dorn and Hanson (2013). Not only have some regions appears to have recovered, it is also possible that local governments have been able to adjust to the shocks after 2007 by reallocating funds from other areas or increasing new taxes to offset revenue declines. The impact of the China Shock on different categories of redistribution spending post-shock remains unanswered.

¹⁷Anzia (2021).

¹⁸Some scholars have since raised the possibility that partisan polarization at the local level is more mixed, holding for certain functions such as public safety, unionization, and primary and secondary education spending, but not others such as subsidies and tax breaks, Jensen et al. (2021); Einstein and Kogan (2016).

3 The Argument

3.1 Globalization, Meritocracy, and Support for Social Investment

Our prediction is that globalization shocks reshape voters' perceptions, *conservatives included*, that the working class deserves greater social investment support, but not social assistance. Meritocracy – the belief that hard work leads to upward mobility – is a culturally sanctioned ideal with deep roots in U.S. history, anchored in the "Protestant work ethic" and popular rags-to-riches narratives.¹⁹ This conviction resonates across the ideological spectrum, albeit to varying extents. However, as inter-generational mobility began to decline in the 1980s, public faith in meritocracy, the so-called American Dream, has fallen to remarkable lows.²⁰

Many Americans blame globalization for this change. As Ballard-Rosa, Goldstein and Rudra (2024) demonstrate, bipartisan elite cues have successfully shaped the widespread perception that globalization harms the job prospects of working class families, and that this is a problem that urgently needs to be addressed. In ordinary circumstances, the public is more unaware of the distributional effects of globalization.²¹ Yet the rapid surge of imports from low-wage economies, or the "China shock," has broken through this general unawareness due to its profound impact on manufacturing jobs, subsequent bipartisan elite cues that globalization is unfair, and widespread media coverage.²² As entire communities began experiencing job losses and economic decline, various news and social media outlets, as well as local and national politicians, amplified this narrative.

Consistent messaging from political elites on both sides of the ideological spectrum has convinced a growing number of Americans that globalization has destroyed the meritocracy underpinning the American Dream and unfairly left American workers behind.²³ The China Shock has become a symbol of the negative impacts of globalization on hard working Americans. By 2018,

¹⁹Kim (2023).

²⁰Chetty et al. (2022). See also <https://pewrsrc.org/3AeDg7G>.

²¹Rho and Tomz (2017)

²²Brutger and Guisinger (2025); Matthews (2013); Hilsenrath and Davis (2016); Ballard-Rosa, Goldstein and Rudra (2024); Krugman (2024).

²³Ballard-Rosa, Goldstein and Rudra (2024).

only 36 percent of Americans thought trade creates jobs and only 31 percent believed it helps wages.²⁴

We argue that globalization's perceived challenge to America's longstanding ideal of meritocracy can change views of redistribution, and particularly, the importance of social investment. Drawing on Petersen et al. (2011), we think globalization may drive citizens to more strongly support some types of redistribution for those they view as victims of circumstances beyond their control.²⁵ Elite cues that trade with low-wage countries is undermining American meritocracy can trigger the deservingness heuristic for American workers and their families, particularly for those located in areas hard hit by low-wage trade shocks.

Decades of perceived unfair global competition from low-wage economies have united diverse groups around a common concern for economic fairness and a desire for policies that enable such workers to move ahead, and restore meritocracy and the American Dream of inter-generational mobility.²⁶ Research shows that whole communities are impacted by the shocks and not just those individuals who work in tradable sectors. Working class families in high manufacturing dependence areas were the hardest hit, especially if the region had low overall levels of human capital Bloom et al. (2024).²⁷ As Broz, Frieden and Weymouth (2021) observe, manufacturing production and activities have been concentrated in specific regions of the country. The entire community suffers as demonstrated by large drops in labor force participation, slow median household income growth and increasing 'deaths of despair.'²⁸

The perception that globalization affects the long-term job market prospects and well-being of working class families can lead a broader segment of the polity to favor social investment policies. Social investment at least partially addresses the perceived effects of globalization on meritocracy. From a sociotropic perspective, individuals can view social investment in things like education and

²⁴Stokes (2018).

²⁵Oorschot (2000); Petersen et al. (2011).

²⁶Mutz (2018).

²⁷As Bloom et al. (2024) show, areas with high populations of college educated workers experienced positive employment growth since they were more likely to transition to service job. Whereas, service job gains did not offset manufacturing job losses in low human capital areas with high manufacturing.

²⁸Broz, Frieden and Weymouth (2021); Case and Deaton (2020).

job (re)training as essential for keeping the country competitive and ensuring its workforce is prepared to outpace competition from foreign workers. This sentiment applies to the next generation as well, since future workers must be equipped with skills to compete with foreign workers in an increasingly competitive economic environment. Local leaders are well aware of this reality. Take for instance a recent statement by the Mayor William J. Healy II of Canton, Ohio in his State of the City Address:

The importance of a strong education system is [...] needed to build the foundation of a strong city. As we shift into a more globalized and interconnected world, we must make sure our children have every opportunity to succeed. Having just a high school diploma is not enough anymore in order to compete in a global market. But graduating from high school is the first step.

— *Mayor William J. Healy II, State of the City Address, Canton, Ohio (2014)*

This narrative about globalization, however, does not necessarily imply increased support for social assistance. The widespread sense of vulnerability and loss of economic mobility opportunities are not easily "fixed" with temporary government relief. Americans are less likely to perceive that social assistance will directly restore meritocracy and inter-generational mobility, especially in a competitive global economic environment. Indeed, the United States is an outlier with respect to its low support for many forms of redistribution relative to other advanced democracies, and it is particularly challenging to change entrenched views on social assistance.²⁹ Means-tested welfare policies aim to provide minimal, short-term cash transfers to prevent individuals from falling into deep poverty. They are often associated with negative stigmas, including perceptions of being unwilling to work or "lazy."³⁰ Social assistance is thus less likely to address voters' concerns about reviving the American Dream. In contrast, government investments in equal opportunity policies, such as education and skills training, are not only less stigmatized, but they also offer a pathway for American workers to achieve self-sufficiency and out-compete with foreign workers.

Simply put, as many feel that generations of American workers are being left behind in the global economy, stigmatized means-tested benefits are unlikely to be the solution they seek. Rather,

²⁹Culpepper et al. (2024); Esping-Andersen (1990)

³⁰Applebaum (2001); Esping-Andersen (1990).

we expect public support for social investment to help working class families prosper in the labor market to increase.

3.2 Why Globalization Shocks can Overcome Partisan Polarization

Since liberals generally support most types of redistribution, we anticipate that conservatives will be the most sensitive to the deservingness heuristic associated with trade shocks and working class families.³¹ Liberals tend to lend steady support to a broad range of welfare policies because they believe that factors outside of individual control—such as luck, families that one is born into, wealth and connections—determine income mobility.³² They believe that structural barriers to advancement and that redistribution can help disadvantaged individuals or groups can overcome these barriers.

In contrast, conservative support for redistribution is more contingent on perceptions of deservingness and their belief that individual outcomes are based of their own doing, rather than circumstances beyond their control.³³ Also at the heart of their conservative opposition is the belief that governments are a "problem" and prefer market-based solutions. Alesina and Angeletos (2005) found strong partisan polarization in redistribution preferences; conservatives consistently resist government efforts to engage in redistribution, *including the expansion of social investment policies*. This pattern held even when they were confronted with downward inter-generational mobility expectations. Alesina and Angeletos (2005) conclude that strong beliefs in the fairness of the market and resistance to government intervention drive conservatives' resistance to redistribution.

Yet, this is precisely why we expect conservatives to increase support for social investment in response to cues that low wage competition from foreign workers is undermining meritocracy and unfairly hurting American working class families. When such disruptions are framed as undermining the fairness of the market, conservatives are more likely to view affected workers as deserving

³¹Kuziemko, Marx and Naidu (2023) discuss how 'new' more educated Democrats tend to be more supportive of social assistance-type (or 'tax and transfer') policies to promote egalitarianism.

³²Fong (2001); Fong, Bowles and Gintis (2006)

³³Petersen et al. (2011).

support. Social investment then becomes a way to re-establish market-based opportunity and meritocracy. Put differently, conservatives who see trade as threatening America's meritocracy are more likely to support upgrading workers' skills, so that effort and ability once again determine success when competing against foreign labor.

Take for example Catawba County in Hickory, North Carolina, which was one of the areas hardest hit by the China shock. Unemployment surged and the county lost 40,000 manufacturing jobs. In response, the Catawba County Board of Commissioners approved \$2.6 million in county funds by the mid 2010s as start-up money for 'K-64', a program designed to prepare students in public schools to "compete in the global economy".³⁴ Notably, Catawba is a deeply red county. In 2016, then-candidate Trump won 67% of the vote, compared to 30% for Hillary Clinton.³⁵ Yet, in 2017, the Republican-controlled board issued a unanimous vote for the aforementioned social investment policy, signaling their strong agreement that prioritizing education and workforce investment were the county's only path forward.³⁶

In sum, as trade shocks erode job opportunities for working class families, we expect conservatives to reevaluate their distaste for certain forms of government intervention, particularly social investment, as a means to restore meritocracy. Liberals are likely to support both social investment and social assistance in response to the shocks, since their support for redistribution is generally high. Consequently, we anticipate bipartisan support for social investment – but not social assistance – will rise in this environment.

3.3 Hypotheses

Our core argument is that globalization shocks heighten cross-ideological support for social investment, incentivizing local governments to expand the supply of such policies. In terms of citizens' expressed preferences, we anticipate that increased anxiety about globalization will increase sup-

³⁴https://www.catawbacountync.gov/strategic-plan/_docs/k-64-backgrounder.pdf.

³⁵https://www.catawbacountync.gov/site/assets/files/3177/2016-11-08_general.pdf.

³⁶<https://www.catawbaedc.org/news/county-commissioners-ok-k-64-program>.

port for social investment and not social assistance as a response. In terms of policies, we expect that localities hit hardest by globalization respond with increased social investment. And we expect this to not be restricted to liberal people or places. We would expect conservative people and places to have similar reactions.

Hypothesis. (1) *Globalization shocks increase support for social investment, but not social assistance.*

Hypothesis. (2) *This relationship will be present in conservative areas/individuals. It is not limited to liberals.*

4 Spending Preferences, Survey Data

We first evaluate Hypothesis 1 and 2 by looking at citizens' expressed preferences for different types of redistributive policies. We conducted two large survey experiments, as well as an additional follow up survey, and find evidence that citizens prefer social investment spending as a response to globalization, but not social assistance. More strikingly, our findings support Hypothesis 2, revealing that these patterns hold across partisan lines, suggesting bipartisan backing for specific forms of redistribution.

4.1 Experimental design

For our first survey experiment, we recruited 3,070 adult U.S. respondents from 14-15 June 2023. We used Lucid Theorem for online recruitment of a sample with similar demographic characteristics to a nationally representative sample. We then replicated the first experiment with a nearly identical approach embedded in the 2023 American Institutional Confidence Poll.³⁷ The AIC poll was administered by YouGov to a representative sample of 4,183 U.S. adult respondents, fielded

³⁷Ladd, Tucker and Kates (2018).

13 October 2023 - 1 November 2023. This sample included 2,138 respondents re-contacted from previous waves of the AIC poll in addition to new contacts and an over-sample of 600 non-white respondents (200 each from African Americans, Latino Americans, and Asian Americans) and 900 rural respondents.

Replicating results using different samples, in different time periods, helps ensure that the results we find are robust, and not likely to be driven by unique events at a certain time, particulars of a sample, or simple noise. Both studies were preregistered.³⁸ Since the experiments and question wordings were nearly identical between the two surveys, we present results here with data pooled across the two surveys. Results are very similar across both surveys.³⁹

We randomly assigned respondents to a control condition or a trade treatment.⁴⁰ For the trade treatment, respondents read a prompt about globalization, and were then asked to write a few sentences about the effects of globalization. The wording of this prompt is below. The prompt emphasizes offshoring, one of the most prominent forms of globalization emphasized in elite narratives. Asking respondents to write about the effects of globalization “treats” them with potentially higher salience and anxiety about globalization.

Many US companies have moved their production to other countries. They have replaced workers with labor from other countries or bought products from abroad that were once produced by US workers.

*Some economists think that this **globalization** of production has had large effects on the US economy - some good and some bad. These effects may get stronger in the future.*

Please write a few sentences about this question:

How do you think increased globalization will affect employment in the future?

After the treatment, we asked about the respondent’s support for social assistance and social investment, explicitly highlighting the tax trade-off to underscore the redistributive dimension. We

³⁸[This submission includes the anonymized versions of the plans registered on OSF].

³⁹See appendix for details about differences between surveys and results.

⁴⁰For the Lucid survey, we block-randomized based on the respondent’s party identification. For the AIC survey, we did not block randomize. Respondents were well-balanced in their observable characteristics across treatment conditions. See appendix.

asked one question for each, and respondents chose from a 5 point scale (Increase a lot, Increase somewhat, Keep spending about the same, Decrease somewhat, Decrease a lot). We randomized the order of the questions. Note that we refer to social assistance as 'safety net' because the general public is more familiar with this term. The specific wording of the social assistance question is below:

*Some people think that the government should have a **better safety net** to help people who are affected by changes in the economy. This safety net includes things like unemployment benefits and temporary assistance for families in need.*

Expanding these policies would have to be paid for with reduced spending on other government programs, larger budget deficits, or higher taxes.

*Do you think the government should increase or decrease the amount spent on **safety net policies**?*

The question about social investment was identically structured. Except, its first sentence read “Some people think that the government should invest in **policies that help the next generation adapt** to changes in the economy. These policies include things like investments to improve primary and secondary education and vocational training for those who don’t want to attend college. ... Do you think the government should increase or decrease the amount spent on **social investment policies**?”

To further underscore the redistribution for working class families aspect of the social investment treatment, we explicitly note that it is “for those who do not want to attend college.”

For each of these two outcome measures – the questions about social assistance and social investment – we coded a binary indicator variable that equaled 1 if the respondent chose “Increase a lot” or “Increase somewhat,” and 0 otherwise.

4.2 Experimental results

Figure 2 shows results consistent with Hypotheses 1 and 2. The figure shows coefficient estimates for the effect of the trade treatment on the proportion of respondents supporting social investment and social assistance. The coefficients are shown for the full sample and then for subsamples limited to only respondents identifying as Republican or Democrat. These coefficients are from OLS

regressions and include controls for a set of demographic characteristics. The list of controls included the respondent’s age, gender, whether they had kids, employment status, household income, race, and region.

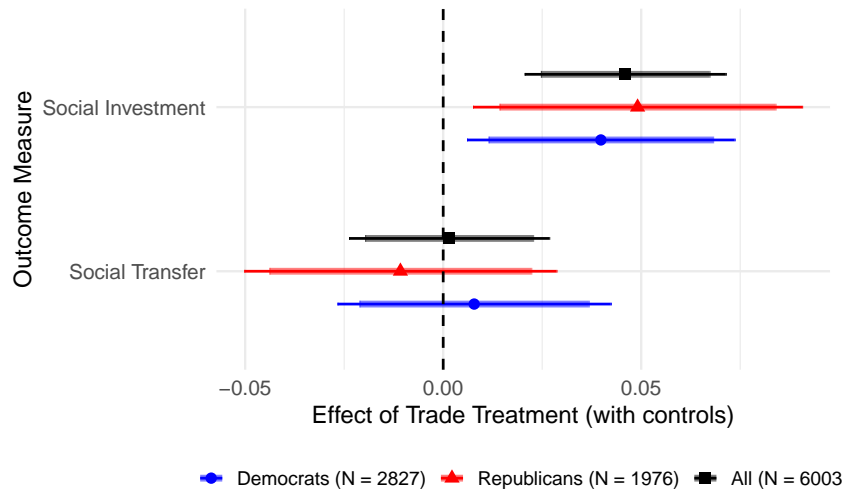


Figure 2: Effect of Trade Treatment, pooled sample with controls

Consistent with Hypothesis 1, the trade treatment increases the proportion of respondents agreeing with the social investment question by approximately 4%. 49.5% of respondents support social investment in the control condition, and this increases to 53.5% under treatment. Consistent with Hypothesis 2, the effect of the trade treatment is positive for Republicans and Democrats. If anything, the effect is slightly stronger for Republicans. For Democrats, treatment raises support for social investment from 68% to 71%. For Republicans, treatment raises support from 30% to 35%.⁴¹

These positive effects are notable because the experiment was conservative (in research design terms) in some ways. The treatment simply asked respondents to speculate about its effects on employment. The outcome measures also explicitly mentioned that increased spending on transfers or social investment would have trade-offs like other spending cuts or higher taxes.

The trade treatment does not have the same effect on support for social assistance. It has a

⁴¹These are the raw percentages, so the differences are not exactly equal to the coefficients from a regression with control variables, like those shown in Figure 2.

near-zero effect in the sample of all respondents.⁴² The Democratic response is surprising given findings in the literature that liberals support social assistance programs more than conservatives. One possibility is that their support for social assistance is already high, and a ceiling effect exists. Additionally, perhaps Democrats share the conservative view that social investment is a better fix for the negative effects of trade shocks than social assistance.

4.3 Robustness

We only show one figure for results because it concisely shows how the results are consistent with predictions. The results are also robust to a wide array of different specifications. The appendix describes these in detail. First, while the figure above shows results from split sample regressions, the results are very similar using interaction term models. We interact treatment with indicator variables for party identification, which gives us party-specific treatment effect estimates. These are positive and significant for Democrats and Republicans for the social investment outcome. They are near-zero and insignificant for the social assistance outcome. Second, we also estimate treatment effects with every possible permutation of control variables. The coefficients are stable, no matter what combinations of control variables is included or if we exclude control variables all together. Third, the results above are from OLS regressions, but logit and probit regressions yield similar results.

The closest related experimental study to ours also found muted effects of trade-related treatments on support for social assistance.⁴³ Their treatment blamed the closing of a GM plant on import competition. Among Americans and Canadians, they found slightly larger, positive effects on an outcomes about job retraining and education targeted at the laid off workers, though these were insignificant. The differences could arise since our social investment outcome measure focuses on broader, non-targeted longer term investments, rather than retraining only for those immediately laid off. Baccini, Guidi and Poletti (2025) found that European respondents preferred

⁴²The baseline levels of support for transfers under the control condition are 49% for all respondents, 68% for Democrats and 29% for Republicans.

⁴³Brutger and Guisinger (2025).

retraining as a response to layoffs, also targeted only at those who lost their jobs.

4.4 Mechanisms

Our proposed mechanism links bipartisan support for social investment and globalization shocks because of the view that trade hurts American meritocracy. To better isolate this mechanism, we conducted follow up surveys without an experimental component. Our goal was to confirm that the links in the chain of our argument were present for respondents, and to confirm that the partisan patterns we observed in the experiment were also present.

We wanted to confirm that: (1) respondents thought trade had harmed upward mobility and the American Dream, (2) they viewed social investment as a stronger remedy than social assistance, and (3) these patterns were not limited to liberal respondents. Each of these three things were apparent in the responses.

We recruited 1,328 additional respondents on Lucid on 8/9 September 2025. We first asked:

Since the 1980s, it has become harder for children to do better than their parents. Many people say that the heart of the American Dream is the idea that kids can get ahead if they work hard. In your opinion, has trade between the United States and low wage countries like Mexico, China, or India, made achieving the American Dream harder, easier, or made no difference?

Respondents could choose from five response options that ranged from "*Trade with low wage countries has made it a lot harder for kids to do better than their parents*" to "... *made it a lot easier...*". For numerical descriptions, we coded these responses from 1-5 with 5 corresponding to "a lot harder". The emphasis on low wage countries was intended to cue exposure to the types of jobs disproportionately held by working class families, while avoiding explicit class language that could generate social desirability effects or ideological priming.

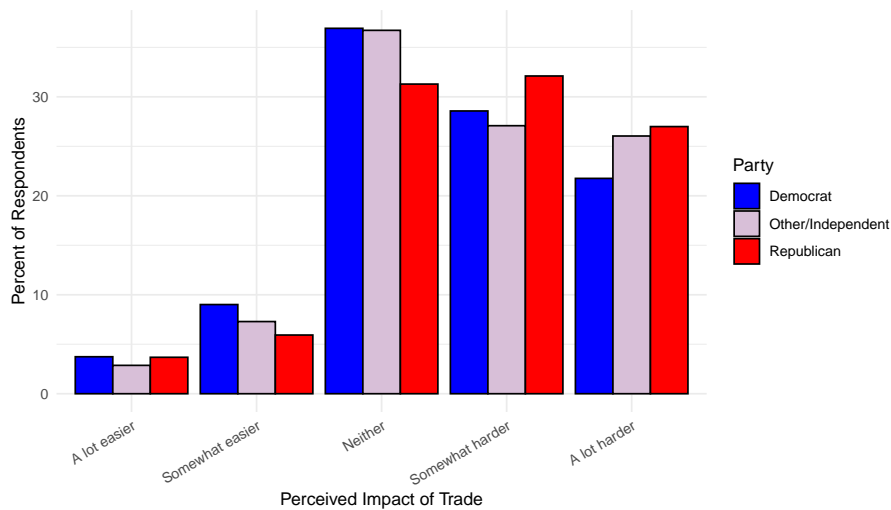
We then asked respondents for their opinions about what the government could do to help. We asked whether the government should spend more or less on:

- K-12 education

- Unemployment benefits and cash assistance for families who are struggling
- Job training and trade schools

Respondents chose from a similar five-point scale that ranged from "Spend a lot more" to "Spend a lot less".⁴⁴ The first two items capture the social investment versus social assistance difference. The third item helps us ensure that support for education spending is not simply support for vocational or job training. For numerical descriptions, we coded "spend a lot more" as 5.

Figure 3 shows the distribution of responses to the question about whether trade harmed the American dream, broken down by party identification.⁴⁵ A majority of all party affiliations agreed that trade had made achieving the American dream somewhat or a lot harder. Republicans were approximately 9% more likely to blame trade than Democrats (59.1% versus 50.3%). The means for the numerical codings of these responses are very similar across parties: 3.73 for Republicans and 3.56 for Democrats. Independents were generally in the middle.



Summary by Party

Democrat (N = 455): 50.3% chose a lot/somewhat harder, Mean = 3.56

Other/Independent (N = 384): 53.1% chose a lot/somewhat harder, Mean = 3.66

Republican (N = 489): 59.1% chose a lot/somewhat harder, Mean = 3.73

Figure 3: Perception that trade harmed the American Dream

⁴⁴We randomized the order of the three spending items.

⁴⁵We classified respondents as Democrat/Republican if they chose either party or if they chose "Independent: Lean Democrat/Republican." Results are robust to different classifications of the "leaning" respondents.

Figure 4 shows the distribution of responses about whether the government should spend more to help people achieve the American Dream. A strong majority from all three partisan positions support increasing K-12 education. Even among Republicans, 73.8% support increased social investment spending. In contrast, their support for increased social assistance is significantly weaker (approximately 23%). As expected, party splits are much wider for social assistance, compared to social investment. There is a 29 percentage point difference for social assistance, compared to an 18 point difference for social investment. Interestingly, Republicans support job training more strongly than K-12 education spending, but only by approximately 8% more. Independents are again in the middle for all spending categories.

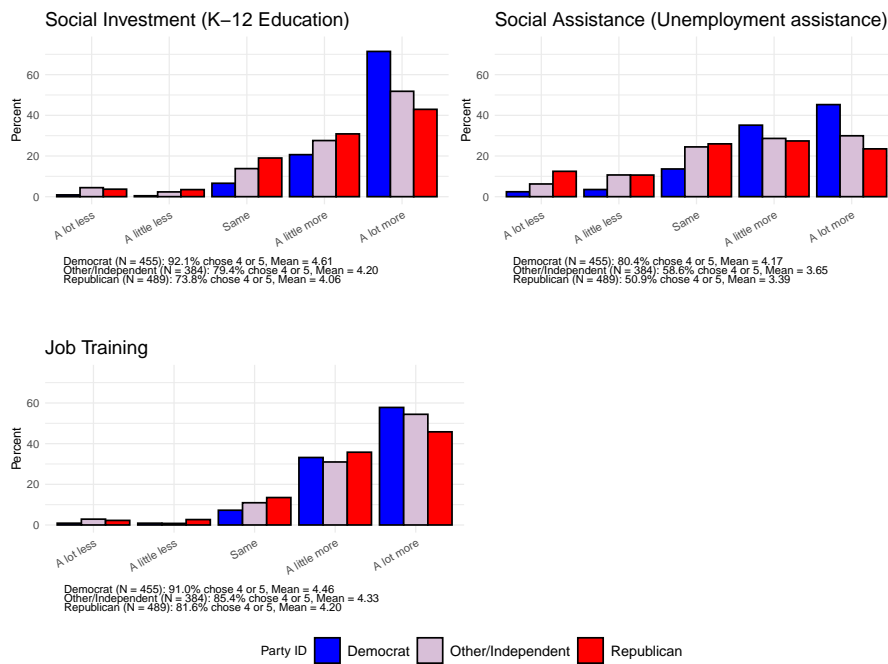


Figure 4: Support for spending on social investment and assistance

Republican support for increased K-12 education spending stayed strong, even when we added an additional part of the question that explicitly mentioned the fiscal consequences of increased spending. Later in the survey, we also asked "Do you agree or disagree with the following statement? The government should provide more funding for K-12 schools so that children can compete with foreign workers, even if it means raising taxes." Respondents chose from a five point

agree/disagree scale. This question explicitly mentions that increased spending would entail increased taxes. Figure 5 shows the distribution of responses. The average level of support for increased spending across all partisans was, of course, lower with this additional component of the question. However, even with this additional downside to spending – one to which Republicans would be especially sensitive – 55.6% of Republicans chose either "Strongly agree" or "Somewhat agree".⁴⁶ Democratic support also remained strong, with 65% agreeing.

In interesting contrast, we see that Republican support drops to 44.4% when asked if they agreed whether "*government should provide more funding for K-12 schools so that American children can better compete with workers from other states, even if this leads to higher taxes.*" Clearly, there is something specific about competition from foreign workers that increases conservatives' support for more social investment spending, rather than competition more generally.

⁴⁶We did not ask a similar question about increased social assistance, with a tax component. Though we would note that the original survey experiment also explicitly mentioned the possible downsides of increased spending for both social investment and assistance.

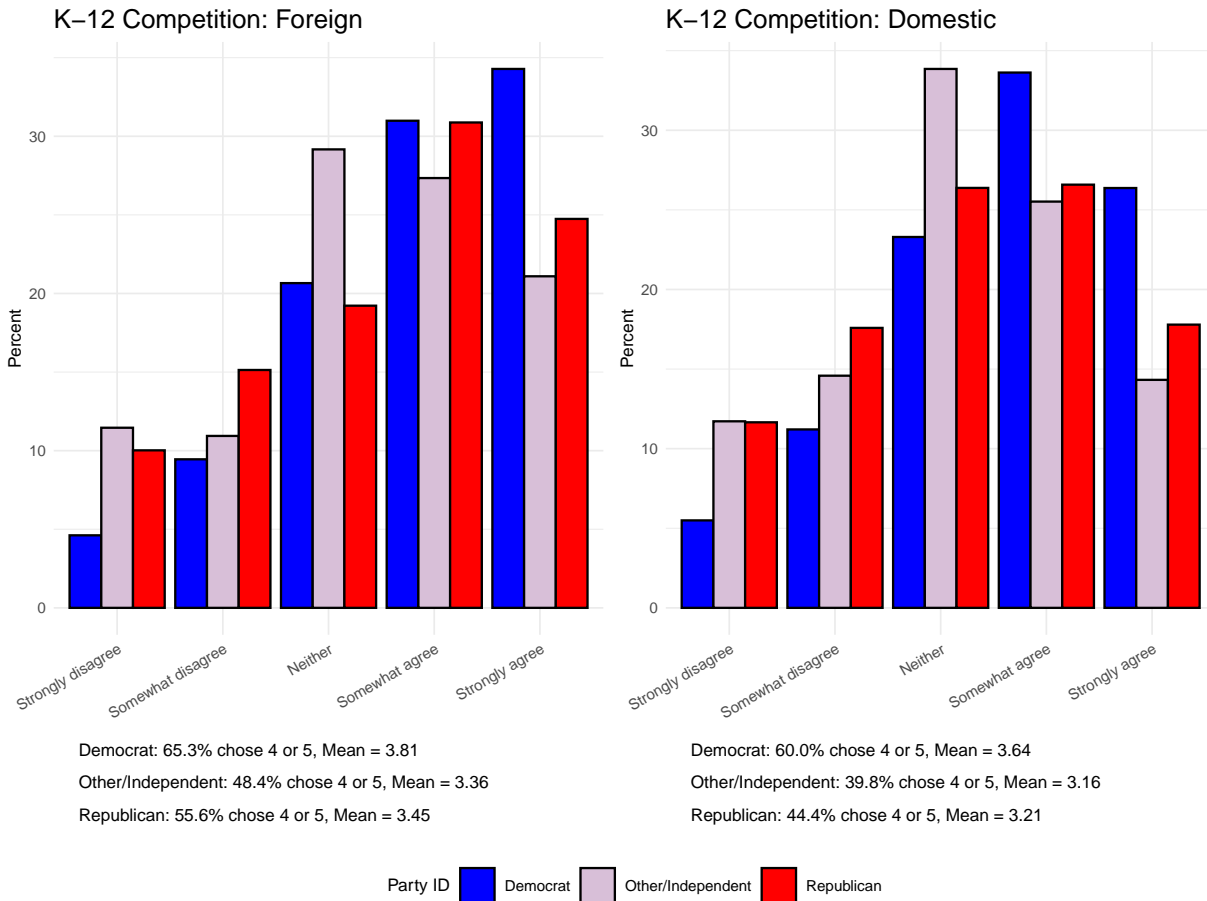


Figure 5: Support for spending on social investment, with tax prompt

5 Local Education Spending, Observational Data

The previous section showed key features of Americans' preferences over how to respond to globalization. Globalization moves both Democrats and Republicans to support more social investment. The survey evidence was about preferences for what the government should do. But what policies *did* governments actually choose in response to globalization? Are the preferences we identified in the experimental data reflected in meaningful policy choices? Here, we show evidence that the answer is "yes." The pipeline from preferences to policies is, of course, long, complicated, and imperfect. But here, we show that local areas exposed to import competition responded by providing more social investment in the form of education spending. We think of this as a second test that reinforces the findings of the evidence above.

We focus on local-level spending decisions, specifically on commuting zones (CZs). CZs are collections of counties that are grouped to "more closely reflect the local economy where people live and work."⁴⁷ This level of analysis is appropriate because the intensity of import exposure varies sub-nationally. It varies greatly across and within states, where one area may be more affected than another. Examining how localities collect and spend money is important because we want the level of the treatment to match the level of a potential response.⁴⁸

Additionally, local education spending decisions- either at county level or school district- reflect a combination of state education directives and local political priorities. Federal money generally makes up a small percentage of U.S. education expenditures.⁴⁹ State formulas tend to be slower to adjust and standardized across regions, so they may be less immediately responsive to local-level economic disruptions.⁵⁰ Local governments, on the other hand, can more quickly respond to shocks that affect their area with budget re-allocations, increasing property taxes, or lobbying state representatives for more funding. Regardless, our measure of local education spending captures expenditures at the local level for this purpose, along with state and federal education

⁴⁷<https://www.ers.usda.gov/>.

⁴⁸Krueger and Xu (2015).

⁴⁹Federal funding generally makes up 6-13% of spending. The remaining share is roughly half from state and half from local level sources (Peter G. Peterson Foundation (2025)).

⁵⁰Allegretto, García and Weiss (2022).

grants.⁵¹

5.1 Import Penetration

We follow the by-now familiar methodology for constructing shift-share measures of exposure to imports. These measures use trade and employment data to describe whether a particular CZ experienced an increase in exposure to imports over a particular time period. Using the notation from Feler and Senses (2017), we construct the measure of import penetration exposure per worker (IPW) as:

$$\Delta IPW_{uit} = \sum_j \frac{L_{ijt}}{L_{ujt}} \frac{\Delta M_{upjt}}{L_{it}} \quad (1)$$

The first term describes the “share” component. L_{ijt} is the number of workers employed in sector j , in CZ i , at the start of time period t . L_{ujt} is the total employment in sector j across the entire United States (the “u” subscript) at the start of time period t . The second term describes the “shift.” ΔM_{upjt} is the change in value of imports for sector j from importing partner p during time period t , across the entire United States. We focus on China, since it is the most prominent and politically salient import partner to the United States. For this measure, we use the time periods 1992-2012 and 2012-2022. We follow existing research in using longer time periods to account for broad trends over time, as well as time for revenue recovery.

5.2 Local Level Education Expenditures

Local level expenditures of any type are hard to attain reliably and consistently across time periods and localities. The U.S. National Center for Education Statistics (NCES), which is a branch of the Department of Education publishes its “Common Core of Data” (CCD) annually, based on reports from *all* school districts, covering public elementary, secondary, adult and vocational schools. This comprehensive dataset has the advantage of extensive temporal and spatial coverage. The CCD

⁵¹We also replicate our analysis excluding revenue from state and federal sources and find similar results. See robustness section below.

data cover the years 1986 to the present (2023-2024 at the time of writing). This lets us match measures of the change in expenditures easily to the time periods used in the IPW measure.

We construct a measure of education spending, E_{it} , which is the total spending on elementary, secondary, adult, and vocational education.⁵² For each of the two time periods, we calculated the change in education spending and annualized this amount.⁵³ In other words, ΔE_{it} equals the percent change from the start of the time period to the end of the time period, divided by the number of years in the time period.⁵⁴

5.3 Regression Specifications

Our primary empirical specifications estimate the effects of changes in import penetration on annualized changes in expenditures over time period t . The first regression takes the following form, estimated via OLS:

$$\Delta E_{it} = \beta \Delta IPW_{uit} + T + R + \gamma p_i + \varepsilon_{it} \quad (2)$$

T denotes a set of dummy variables indicating the time period in question. We include indicators for both time periods and exclude an intercept to make it immediately easy to see differences in the two time periods. R denotes a set of 8 region dummy variables, corresponding to the geographic region of CZ i . In regressions with all CZs pooled together, we also include the CZ's two-party Democratic vote share from 1992 (p_i). Specifically, we summed the votes for each county in each CZ for Clinton and Bush. In some specifications, we split the sample into Democratic and Republican CZs based on their 1992 two-party vote share. CZs are classified as Democratic or Republican based on whether this share is above or below 0.50. Standard errors are clustered by CZ.

⁵²Results are similar when we exclude adult/vocational spending. See robustness section below.

⁵³CCD data are at the county, state, and district level. Districts are associated with counties. We took the counties that constituted each CZ and summed their spending to get a spending amount at the CZ level.

⁵⁴Using 0 to denote the starting year of the time period and 1 to denote the ending year, $\Delta E_{it} = \frac{E_{i1} - E_{i0}}{E_{i0}} \left(\frac{1}{year_1 - year_0} \right)$. The first term is the percent change in expenditures in CZ i and the second term divides by the number of years in time period t , to annualize this percent change.

The second regression specification uses the IPW measure calculated based on Chinese exports to the 8 highest-income countries, excluding the United States, as an instrument for the IPW measure for U.S. CZs. We estimate the instrumental variables regressions via two-stage least squares (2SLS). The IV specification helps guard against the possibility that changes at the CZ level, like a change in demand, drove Chinese imports into the United States.

Hypothesis 1 predicts a positive coefficient estimate for β , indicating that CZs that experienced greater import penetration increased their education spending at a faster rate. Hypothesis 2 predicts a positive coefficient for both Republican and Democratic CZs.

5.4 Results: Education Spending

Figure 6 shows a scatterplot of the IPW measure versus annualized change in education spending.⁵⁵ Red dots indicate Republican CZs and blue dots show Democratic CZs. We show best-fit lines for both types of CZs. The vast majority of observations are in the first quadrant. Nearly all CZs of both political types were exposed to Chinese imports, though to very different degrees. Similarly, nearly all CZs increased their education spending over these time periods, again to varying degrees.

The plot reveals two important trends. First, overall spending is positively correlated with import exposure. CZs that were more exposed to imports tended to increase their education spending at a faster rate. Second, major partisan differences in this relationship appears to be absent. The correlation between import penetration and education spending was only slightly larger for Democratic CZs.

Table 1 shows the coefficient estimates, using OLS then 2SLS on the full sample. We then split the sample by party in columns 3-4 (Democratic) and 5-6 (Republican). The positive coefficients in the first two columns are consistent with Hypothesis 1. Greater increases in IPW were associated with greater increases in education spending in the full sample. CZs that were hit harder with import competition also tended to be those that increased their education spending at a faster rate than CZs that were less hard-hit.

⁵⁵We limited the range of the axes since there are some large outliers. This makes the relationships easier to read.

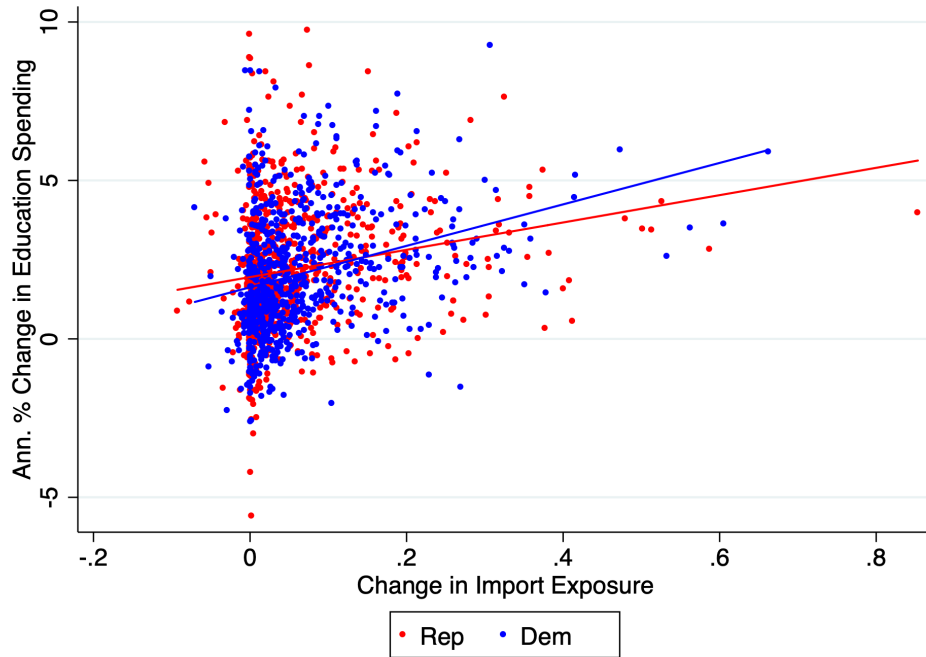


Figure 6: Annualized Percent Change in Education Spending (CCD Data), 1992-2012 and 2012-2022, versus Exposure to Chinese Imports

The positive coefficients in the split sample regressions, especially for Republican CZs in the final two columns are consistent with Hypothesis 2. *Both* Republican and Democratic CZs increased spending on education in response to the China shock. The coefficients for both types of CZs are similar to one another, for OLS and 2SLS specifications.

These positive coefficients are substantively meaningful as well. In 1992, the mean level of education expenditure at the CZ level was approximately \$400M. The coefficients describe how changes in the explanatory variables affect the annualized growth rate of education spending. If a CZ with the mean level of 1992 spending were in the 25th percentile of the IPW measure, then its predicted spending level in 2022 would be approximately \$802M.⁵⁶ If that CZ had instead been in the 75th percentile of the IPW measure, then we would predict that its 2022 spending level would be approximately \$856M. This difference (+54M) is approximately a 7% increase in education expenditures for a CZ moving from the 25th to the 75th percentile of import exposure.

⁵⁶This calculation sets the other variables at their sample means and describes the amount of spending after accounting for 29 years at the growth rate implied by the coefficient estimates.

Table 1: Effect of Import Penetration on Education Spending (CCD Data), 1992-2022

	(1)	(2)	(3)	(4)	(5)	(6)
	OLS Full	2SLS Full	OLS Dem	2SLS Dem	OLS Rep	2SLS Rep
Δ Im. Pen.	3.11*** (0.82)	5.26*** (1.25)	3.76*** (1.27)	5.80*** (2.04)	2.66** (1.08)	5.12*** (1.58)
1992-2012	3.49*** (0.57)	3.32*** (0.57)	2.85*** (0.45)	2.64*** (0.48)	2.20*** (0.45)	1.86*** (0.48)
2012-2022	2.44*** (0.57)	2.44*** (0.56)	1.90*** (0.43)	1.87*** (0.43)	1.09** (0.43)	0.92** (0.44)
Dem. 1992 Pct	-0.93 (0.66)	-1.00 (0.66)				
Sample	All CZs	All CZs	Dem. CZs	Dem. CZs	Rep. CZs	Rep. CZs
Observations	1,444	1,444	700	700	744	744

Standard errors in parentheses

* $p < 0.10$, ** $p < 0.05$, *** $p < 0.01$

5.5 Results without federal and state revenue

The spending data in the models above include revenue from local, federal, and state sources. State revenue that is spent at the local level is especially relevant for our analysis, because state revenue is also a large source of county education funding. However, it is often based on a per-pupil redistributive formula, and it could increase if it was compensating for harm done by import penetration rather than in response to partisan or voter preferences. Likewise, some federal revenue programs were concentrated in particular time periods, as with COVID-recovery funds, and they might have also been more intense in areas facing more import competition.⁵⁷

Fortunately, the NCES data include the amount of federal and state revenue given to the local education unit. We can therefore calculate the amount of education spending minus transfers from the state and federal levels to the locality. With this measure, local expenditures are net of money transferred from those two sources.

⁵⁷We don't have strong reason to believe this is the case, but it is possible.

Table 2: Effect of Import Penetration on Education Spending less federal and state revenue (CCD Data), 1992-2022

	(1)	(2)	(3)	(4)	(5)	(6)
	OLS Full	2SLS Full	OLS Dem	2SLS Dem	OLS Rep	2SLS Rep
Δ Im. Pen.	4.93*** (1.55)	9.68*** (2.38)	4.66* (2.57)	11.74*** (4.14)	5.25*** (1.90)	8.57*** (2.77)
1992-2012	1.11 (1.08)	0.73 (1.09)	2.28** (0.91)	1.55 (0.97)	1.88** (0.79)	1.41* (0.83)
2012-2022	-0.98 (1.07)	-0.98 (1.07)	0.42 (0.87)	0.31 (0.87)	-0.43 (0.75)	-0.65 (0.76)
Dem. 1992 Pct	2.14* (1.24)	1.98 (1.25)				
Sample	All CZs	All CZs	Dem. CZs	Dem. CZs	Rep. CZs	Rep. CZs
Observations	1,444	1,444	700	700	744	744

Standard errors in parentheses

* $p < 0.10$, ** $p < 0.05$, *** $p < 0.01$

In Table 2, we re-estimated our main analysis using the outcome variable that excludes federal and state revenue. The pattern still holds and confirms both our main hypotheses. Import penetration is positively and significantly associated with greater education spending, in both Republican and Democratic CZs. The magnitudes of the coefficients are actually larger. When we exclude revenue from state or federal sources, increased import penetration is associated with even steeper increases in education spending.

5.6 Robustness

These results are robust to other potential concerns.⁵⁸ Import penetration also potentially affects the number of people living in a locality. We would generally expect dislocation from import penetration to push people to move out of a harder-hit CZ. This would bias against our findings of increased education expenditures, since it would presumably mean a smaller revenue base. How-

⁵⁸See appendix for all robustness checks.

ever, our findings above also obtain using per capital education expenditures. Import penetration is associated with a faster increase in per-capita education expenditures, as well. The only difference is that results are not as strong statistically for the OLS specification for Republican CZs. For all the other specifications, included 2SLS for Republican CZs, import penetration has a positive and significant effect at least the 0.10 level.

The above analysis used split sample regressions for partisan analysis. The results are very similar using an interaction term model, where we interact the import penetration measure with an indicator for whether a CZ was Democratic or Republican in 1992.

It is also possible that CZs with higher or lower initial levels of spending had more or less ability to grow spending over time. In other words, since our model is about changes in import penetration and changes in spending, it's possible that initial levels matter. We show how the positive results for education spending are consistent even as we limit the sample to exclude observations particularly high or low in the distribution of initial spending levels. The magnitude of the estimated effect of import penetration tends to be higher in CZs with lower levels of initial spending, but it is positive and significant across wide ranges of the distribution of initial spending. In other words, our effects are not solely driven by outlier CZs that spent a lot or a little initial time periods.

It is also possible that certain CZs were on permanently upward or downward spending trajectories, which could correlate with features of their local economy. We also conducted a placebo test where we used the first time period's import penetration measure as the explanatory variable for second period changes in spending. If our results were explained by trends that spanned the entire time period of our sample, then that would weaken results. We do not find that variation in import penetration from the preceding decade affected spending. This lessens the worry that certain CZs just happen to be on particularly steep spending trajectories and raises the credibility of our claim that spending responded to import penetration. We also cluster standard errors at the CZ level; the statistical significance of the results does not change.

We also show how the estimated effect of import penetration is largely consistent across CZs with different levels of support for Republicans or Democrats. We estimated the effects of im-

port penetration on education spending, using a rolling windows approach. Specifically, we re-estimated the effects of import penetration, but limited the sample to different ranges of support for each party, eg only CZs whose Democrat vote share was 0.40 to 0.60. The coefficients are generally stable, positive, and significant limiting the sample to ranges of vote shares for each party.

Finally, we show results using counties as the unit of observation, rather than CZs. CZs are a natural choice, since they are intended to capture areas where people work, live, and commute. But it is possible that a smaller geographical unit could yield different results. The results are similar.

5.7 Results: Fire and Police

Perhaps the effects of import penetration are not specific to social investment spending, but they are instead found across many different types of local level spending? Or perhaps Republican and Democratic CZs change their spending in similar ways, even beyond social investment spending? If import penetration was associated with broad increases in many types of government spending, even beyond social investment, it would weaken our claim that globalization specifically disrupts the political divide over redistribution – a domain historically marked by deep ideological division. Similarly, it would weaken our claim if there was little partisan divergence in any kind of spending at the local level. We would thus be worried about the findings above if import penetration increased other types of spending, like fire and police spending, in all CZs, or if the increases were found in both types of counties. This would indicate that there is nothing "special" about social investment spending.

To assess these possibilities, we conducted a type of placebo test using spending on fire and police services. Here, we show that the effect of import penetration on social investment spending was not the same as on fire and police spending. Import penetration has generally insignificant effects on fire and police spending. And the effects of import penetration on fire and police spending are not especially similar across Democratic and Republican CZs.

Note that – ideally – we could compare the effects of import penetration on social investment

spending with their effects on social assistance spending. However, most social assistance spending comes from the federal government or state governments. This means that any test would be very highly aggregated, e.g. comparing across states or simply across years for the entire nation. We would not be able to clearly match the level of the cause – import penetration’s effects on localities – with the level of the response – how localities spent money.

To measure police and fire spending, we used data from the Census Bureau’s Survey of State and Local Government Finances.⁵⁹ The Census data are collected annually, though they are much more extensively collected during full Census years (years ending in 2 and 7). The surveys collect information from state and local-level governments about a variety of different spending types. We calculated similar measures to those used above, based on annualized percent changes in police plus fire expenditures, at the local level, aggregated up to the CZ level.⁶⁰

Table 3 shows regressions with identical specifications as in Table 1. The effects of import penetration on fire and police spending are small and insignificant. There are also not the same bipartisan effects as found in education spending. In some specifications, import penetration has a negative and insignificant effect for Democratic CZs and has a positive and insignificant effect for Republican CZs. Both effects are also smaller in magnitude than the effects for education spending. Overall, these largely null results give us more confidence that our findings for education spending are not simply an artifact of a broader trend found across different types of spending and counties.

⁵⁹<https://www.census.gov/programs-surveys/gov-finances/about.html>.

⁶⁰We excluded a few implausibly large outliers in fire expenditures, eg a CZ whose fire expenditures rose by over 4,000% annually. These were likely caused by a data entry error by the locality or Census.

Table 3: Effect of Import Penetration on Police and Fire Spending(Census Data), 1992-2022

	(1)	(2)	(3)	(4)	(5)	(6)
	OLS Full	2SLS Full	OLS Dem	2SLS Dem	OLS Rep	2SLS Rep
Δ Im. Pen.	0.54 (1.46)	0.38 (2.23)	0.39 (1.80)	-1.76 (2.88)	0.45 (2.31)	1.94 (3.36)
1992-2012	3.58*** (1.02)	3.59*** (1.02)	0.82 (0.64)	1.04 (0.67)	0.15 (0.96)	-0.05 (1.01)
2012-2022	1.64 (1.01)	1.64 (1.01)	-1.39** (0.61)	-1.35** (0.61)	-1.55* (0.92)	-1.65* (0.93)
Dem. 1992 Pct	-4.89*** (1.18)	-4.88*** (1.17)				
Sample	All CZs	All CZs	Dem. CZs	Dem. CZs	Rep. CZs	Rep. CZs
Observations	1,435	1,435	696	696	739	739

Standard errors in parentheses

* $p < 0.10$, ** $p < 0.05$, *** $p < 0.01$

5.8 Results: Census Education Spending

We used Census data for police and fire spending. Census also collects local level education spending data. CCD data is collected by and in collaboration with the NCES.⁶¹ They both produce datasets and reports from the same underlying survey responses, though with some differences in how they classify certain revenue streams. We prefer the CCD data for the education spending data because its unit (the Local Education Area) is more fine grained and includes charter school independent districts. In practice, data from both sources are very highly correlated.

Table 4 shows the results using Census data. They are very similar to those found using the CCD data. Increased exposure to imports increases education spending overall, and in both partisan types of CZs. The coefficient magnitudes are also very similar, so the implied substantive effects are as well.

⁶¹Cornman, Ampadu and Hanak (2024).

Table 4: Effect of Import Penetration on Education Spending (Census Data), 1992-2022

	(1)	(2)	(3)	(4)	(5)	(6)
	OLS Full	2SLS Full	OLS Dem	2SLS Dem	OLS Rep	2SLS Rep
Δ Im. Pen.	3.34*** (0.69)	5.52*** (1.07)	4.11*** (0.92)	6.15*** (1.48)	2.64** (1.05)	5.01*** (1.53)
1992-2012	3.30*** (0.48)	3.13*** (0.49)	2.38*** (0.33)	2.17*** (0.35)	2.20*** (0.44)	1.87*** (0.46)
2012-2022	1.92*** (0.48)	1.92*** (0.48)	0.97*** (0.31)	0.94*** (0.31)	0.87** (0.42)	0.71* (0.42)
Dem. 1992 Pct	-1.50*** (0.56)	-1.57*** (0.56)				
Sample	All CZs	All CZs	Dem. CZs	Dem. CZs	Rep. CZs	Rep. CZs
Observations	1,444	1,444	700	700	744	744

Standard errors in parentheses. CZs classified by 1992 two-party vote share.

* $p < 0.10$, ** $p < 0.05$, *** $p < 0.01$

6 Implications and Future Research

Our research challenges the prevailing view among scholars, media, and the public that the partisan divide over redistribution in the United States is fixed and intractable. We argue instead that conservatives' views on social investment may be more malleable than their views on social assistance, particularly as a response to the perceived harms of globalization. When voters are exposed to economic shocks that appear to undermine core American ideals of meritocracy, conservatives and liberals are more likely to support increasing social investments that help working class families.

Drawing on county-level spending data and two survey experiments, we find evidence of bipartisan support for increased social investment, particularly those in areas left behind by globalization. Our data are particularly noteworthy because they align survey evidence of preferences with observational data on policies. The data also cover a longer time span than usually considered, since we extend data on the China Shock and education spending through 2022. For the observational data, this enables our analysis to capture a longer time horizon, as local governments may have begun to recover from the initial fiscal impacts of import competition. One interesting implication of our analysis is that the Trade Adjustment Assistance (TAA) program might have sustained bipartisan support if it had been designed as a place-based initiative in the post-China

shock era and had emphasized workforce investment rather than income replacement.

This study makes important contributions to several strands of research. First, by examining how globalization shapes perceptions of deservingness among American workers, we identify conditions under which the partisan divide on redistribution can be overcome – an area rarely explored. Second, we offer new support for the postwar Embedded Liberalism framework by leveraging local-level data and accounting for partisan dynamics, providing a novel perspective on how globalization influences an understudied type of redistribution policy. Third, our findings contribute to debates on whether partisan polarization differs at the local level from the national level, particularly in response to an economic shock. Our national-level survey experiments and local-level spending data then show that conservatives and liberals alike value social investment in response to globalization shocks. Taken together, these findings suggest that partisan polarization over social investment – specifically in response to globalization shocks – may not be as entrenched as commonly assumed, and can be mitigated.

Although our analysis suggests that attitudes toward certain types of redistribution are shifting, we do not expect these changes to translate into an overt public display of bipartisan cooperation on social investment, particularly in a polarized national environment. At present, a very public partisan fight over education centers on the content of the curriculum (diversity, equity, culture war issues), greater school choice (charter schools and vouchers), and greater federal versus state control. Signaling bipartisan cooperation offers limited electoral appeal for either party in today's political climate.

Yet, underneath this all, partisan agreement over prioritizing public education for working class families, particularly in response to foreign competition, has gained quiet momentum. Several workforce education and training initiatives for working class families have been gaining strong bipartisan support under the radar, such as the Adult Education works Act and the JOBS Act. Parties appear to have more overlap on education than the headline education debates suggest⁶².

⁶²See for example this Pew survey that indicate partisan agreement on basics like teaching children reading and math, despite the cultural disagreements (see <https://www.educationnext.org/the-year-in-public-opinion-on-u-s-k-12-education-policy>)

Efforts to reauthorize the Workforce Innovation and Opportunity Act (WIOA) are another good example. This legislation is a prototypical example of social investment in our analysis, as it aims to modernize the workforce system by expanding access to job training, increasing funding on skill development, and strengthen the role of state and local workforce boards so that it is more employer and local demand-driven.

WIOA passed the House with bipartisan support in 2024, but it stalled in the Senate. One of the reasons was Democratic resistance to offsetting workforce expansion with cuts to other safety net programs in the broader budget plans. Our analysis suggests that conservative support for WIOA-style reforms might have been stronger if these efforts were decoupled from broader social assistance policies. Both parties are once again considering authorizing WIOA.

Next steps in this research agenda are critical. Ample empirical evidence reveals that support for redistribution declines when recipients are perceived as belonging to a particular race or ethnic group, particularly when those groups are stereotyped as less deserving because they do not work hard. Do we find the same level of bipartisan convergence on social investment in response to economic shocks in hard hit areas that host large minority or black populations? Second, is globalization as an economic shock unique in triggering a bipartisan response in redistribution? Reactions to trade shocks appear to be unique, likely because the bipartisan consensus that “globalization is bad” for American workers has not (yet) extended to other types of shocks, such as automation, as our preliminary findings on automation show.⁶³ Additionally, our analysis leaves open whether or not increasing social investment is enough to begin countering the backlash against globalization, as the Embedded Liberalism framework predicts.

We conclude with a ray of optimism in a bleak political environment. Despite the sharp differences in national goals, policy preferences and core beliefs that typically divide Republicans and Democrats, our analysis reveals a surprising point of agreement: increasing social investment for working class families. This could be a pillar of "pluralistic liberalism," which facilitates individuals' ability to commit "long-term to careers, communities, people, and ways of life."⁶⁴ This

⁶³See appendix.

⁶⁴Owen (2023) p. 245.

represents a positive alternative to the only things that currently attract some degree of cross-party support: skyrocketing tariffs or illiberal industrial policies.

References

- Abrajano, Marisa A and R Michael Alvarez. 2005. "A natural experiment of race-based and issue voting: The 2001 city of Los Angeles elections." *Political Research Quarterly* 58(2):203–218.
- Alesina, Alberto and George-Marios Angeletos. 2005. "Fairness and Redistribution." *The American Economic Review* 95(4):960–980.
- Alesina, Alberto, Stefanie Stantcheva and Edoardo Teso. 2018. "Intergenerational mobility and preferences for redistribution." *American Economic Review* 108(2):521–554.
- Allan, James P and Lyle Scruggs. 2004. "Political partisanship and welfare state reform in advanced industrial societies." *American Journal of Political Science* 48(3):496–512.
- Allegretto, Sylvia, Emma García and Elaine Weiss. 2022. "Public Education Funding in the US Needs an Overhaul: How a Larger Federal Role Would Boost Equity and Shield Children from Disinvestment during Downturns." *Economic Policy Institute* .
- Anzia, Sarah F. 2021. "Party and ideology in American local government: An appraisal." *Annual Review of Political Science* 24(1):133–150.
- Applebaum, Lauren D. 2001. "The Influence of Perceived Deservingness on Policy Decisions Regarding Aid to the Poor." *Political Psychology* 22(3):419–442.
- Autor, David, David Dorn and Gordon H. Hanson. 2021. "On the Persistence of the China Shock." *National Bureau of Economic Research*.
URL: <https://www.nber.org/papers/w29401>
- Autor, David, David Dorn and Gordon Hanson. 2019. "When Work Disappears: Manufacturing Decline and the Falling Marriage Market Value of Young Men." *American Economic Review: Insights* 1(2):161–178.

- Autor, David, David Dorn, Gordon Hanson and Kaveh Majlesi. 2020. “Importing Political Polarization? The Electoral Consequences of Rising Trade Exposure.” *American Economic Review* 110(10):3139–3183.
- Autor, David H, David Dorn and Gordon H Hanson. 2013. “The China syndrome: Local labor market effects of import competition in the United States.” *American Economic Review* 103(6):2121–2168.
- Baccini, Leonardo, Mattia Guidi and Arlo Poletti. 2025. “Embedded liberalism, economic nationalism, or Welfare Chauvinism? Experimental evidence on policy preferences in tough times.” *Journal of European Public Policy* pp. 1–26.
- Ballard-Rosa, Cameron, Judith L. Goldstein and Nita Rudra. 2024. “Trade as Villain: Belief in the American Dream and Declining Support for Globalization.” *The Journal of Politics* 86(1):274–290.
- Benarroch, Michael and Manish Pandey. 2012. “The relationship between trade openness and government size: Does disaggregating government expenditure matter?” *Journal of Macroeconomics* 34(1):239–252.
- Bloom, Nicholas, Kyle Handley, André Kurmann and Philip A Luck. 2024. The China Shock Revisited: Job Reallocation and Industry Switching in US Labor Markets. Technical report National Bureau of Economic Research.
- Bonifai, Niccolò W., J. Bradford Jensen, Rodney Ludema, Juna Luzi and Nita Rudra. 2024. “Is trade really toxic? How imports support American jobs | White paper.” *Hinrich Foundation*.
- Brady, David, Jason Beckfield and Martin Seeleib-Kaiser. 2005. “Economic Globalization and the Welfare State in Affluent Democracies, 1975–2001.” *American Sociological Review* 70(6):921–948.

- Broz, J Lawrence, Jeffry Frieden and Stephen Weymouth. 2021. "Populism in place: the economic geography of the globalization backlash." *International Organization* 75(2):464–494.
- Brutger, Ryan and Alexandra Guisinger. 2025. "Framing layoffs: Media coverage, blame attribution, and trade-related policy responses." *Political Behavior* 47(2):479–501.
- Burgoon, Brian. 2001. "Globalization and welfare compensation: disentangling the ties that bind." *International Organization* 55(3):509–551.
- Busemeyer, Marius R. 2009. "From myth to reality: Globalisation and public spending in OECD countries revisited." *European Journal of Political Research* 48(4):455–482.
- Busemeyer, Marius R and Julian L Garritzmann. 2019. "Compensation or social investment? Revisiting the link between globalisation and popular demand for the welfare state." *Journal of Social Policy* 48(3):427–448.
- Cameron, David R. 1978. "The Expansion of the Public Economy: A Comparative Analysis." *The American Political Science Review* 72(4):1243–1261.
- Case, Anne and Angus Deaton. 2020. Deaths of Despair and the Future of Capitalism. In *Deaths of Despair and the Future of Capitalism*. Princeton University Press.
- Chaudoin, Stephen and Michael-David Mangini. Forthcoming. "Robots, Foreigners, and Foreign Robots: Policy Responses to Automation and Trade." *Journal of Politics* .
- Chetty, Raj, Matthew O. Jackson, Theresa Kuchler, Johannes Stroebe, Nathaniel Hendren, Robert B. Fluegge, Sara Gong, Federico Gonzalez, Armelle Grondin, Matthew Jacob, Drew Johnston, Martin Koenen, Eduardo Laguna-Muggenburg, Florian Mudekereza, Tom Rutter, Nicolaj Thor, Wilbur Townsend, Ruby Zhang, Mike Bailey, Pablo Barberá, Monica Bhole and Nils Wernerfelt. 2022. "Social capital I: measurement and associations with economic mobility." *Nature* 608(7921):108–121.

- Cornman, Stephen Q., O. Ampadu and K. S. Hanak. 2024. Documentation for the NCES Common Core of Data School District Finance Survey (F-33), School Year 2021–22 (Fiscal Year 2022), Provisional File Version 1a. Technical Report NCES 2024-310 National Center for Education Statistics, Institute of Education Sciences, U.S. Department of Education. Retrieved 2025-08-01. **URL:** https://nces.ed.gov/ccd/pdf/2024310_FY22F33_Documentation.pdf
- Culpepper, Pepper D., Ryan Shandler, Jae-Hee Jung and Taeku Lee. 2024. “‘The Economy is Rigged’: Inequality Narratives, Fairness, and Support for Redistribution in Six Countries.” *Comparative Political Studies* p. 00104140241252072.
- Culpepper, Pepper D, Ryan Shandler, Jae-Hee Jung and Taeku Lee. 2025. “‘The economy is rigged’: inequality narratives, fairness, and support for redistribution in six countries.” *Comparative Political Studies* 58(4):714–745.
- Di Tella, Rafael and Dani Rodrik. 2020. “Labour market shocks and the demand for trade protection: Evidence from online surveys.” *The Economic Journal* 130(628):1008–1030.
- Dreher, Axel, Jan-Egbert Sturm and Heinrich W. Ursprung. 2008. “The impact of globalization on the composition of government expenditures: Evidence from panel data.” *Public Choice* 134(3):263–292.
- Einstein, Katherine Levine and Vladimir Kogan. 2016. “Pushing the city limits: Policy responsiveness in municipal government.” *Urban Affairs Review* 52(1):3–32.
- Esping-Andersen, Gosta. 1990. *The Three Worlds of Welfare Capitalism*. Princeton University Press.
- Favero, Nathan and Ali Kagalwala. 2025. “The politics of school funding: How state political ideology is associated with the allocation of revenue to school districts.” *Educational Policy* 39(3):693–722.

- Feler, Leo and Mine Z Senses. 2017. “Trade shocks and the provision of local public goods.” *American Economic Journal: Economic Policy* 9(4):101–143.
- Fong, Christina. 2001. “Social preferences, self-interest, and the demand for redistribution.” *Journal of Public Economics* 82(2):225–246.
- Fong, Christina M., Samuel Bowles and Herbert Gintis. 2006. Chapter 23 Strong reciprocity and the welfare state. In *Handbook of the Economics of Giving, Altruism and Reciprocity*, ed. Serge-Christophe Kolm and Jean Mercier Ythier. Vol. 2 of *Applications* Elsevier pp. 1439–1464.
- Garrett, Geoffrey. 1998. *Partisan Politics in the Global Economy*. Cambridge Studies in Comparative Politics Cambridge: Cambridge University Press.
- Garrett, Geoffrey and Deborah Mitchell. 2001. “Globalization, government spending and taxation in the OECD.” *European Journal of Political Research* 39(2):145–177.
- Haelg, Florian, Niklas Potrafke and Jan-Egbert Sturm. 2022. “The determinants of social expenditures in OECD countries.” *Public Choice* 193(3):233–261.
- Hays, Jude C., Sean D. Ehrlich and Clint Peinhardt. 2005. “Government Spending and Public Support for Trade in the OECD: An Empirical Test of the Embedded Liberalism Thesis.” *International Organization* 59(2):473–494.
- Herwartz, Helmut and Bernd Theilen. 2014. “Partisan influence on social spending under market integration, fiscal pressure and institutional change.” *European Journal of Political Economy* 34:409–424.
- Hilsenrath, Jon and Bob Davis. 2016. “Why China Trade Hit U.S. Workers Unexpectedly Hard.” *Wall Street Journal*.
- URL:** <http://blogs.wsj.com/economics/2016/08/11/why-china-trade-hit-u-s-workers-unexpectedly-hard/>

- Hopkins, Daniel J. 2018. *The increasingly United States: How and why American political behavior nationalized*. University of Chicago Press.
- Jahn, Detlef. 2006. “Globalization as ‘Galton’s Problem’: The Missing Link in the Analysis of Diffusion Patterns in Welfare State Development.” *International Organization* 60(2):401–431.
- Jensen, Amalie, William Marble, Kenneth Scheve and Matthew J Slaughter. 2021. “City limits to partisan polarization in the American public.” *Political Science Research and Methods* 9(2):223–241.
- Karatekin, Canan, Susan Marshall Mason, Michael Latner, Bria Gresham, Frederique Corcoran, Anna Hing and Andrew J Barnes. 2023. “Is fair representation good for children? effects of electoral partisan bias in state legislatures on policies affecting children’s health and well-being.” *Social Science & Medicine* 339:116344.
- Kim, Eunji. 2023. “Entertaining beliefs in economic mobility.” *American Journal of Political Science* 67(1):39–54.
- Krueger, Brian S. and Ping Xu. 2015. “Trade Exposure and the Polarization of Government Spending in the American States.” *American Politics Research* 43(5):793–820.
- Krugman, Paul. 2024. “Opinion | Preparing for the Second China Shock.” *New York Times*.
URL: <https://www.nytimes.com/2024/05/14/opinion/china-imports-tariffs-biden.html>
- Kuziemko, Ilyana, Michael I Norton, Emmanuel Saez and Stefanie Stantcheva. 2015. “How elastic are preferences for redistribution? Evidence from randomized survey experiments.” *American Economic Review* 105(4):1478–1508.
- Kuziemko, Ilyana, Nicolas Longuet Marx and Suresh Naidu. 2023. “Compensate the Losers?” Economic Policy and Partisan Realignment in the US. Technical report National Bureau of Economic Research.

- Ladd, Jonathan, Joshua Tucker and Sean Kates. 2018. “2018 American institutional confidence poll.” *Baker Center for Leadership and Governance, Knight Foundation*.
- Margalit, Yotam. 2013. “Explaining social policy preferences: Evidence from the Great Recession.” *American Political Science Review* 107(1):80–103.
- Marshall, John and Stephen D. Fisher. 2015. “Compensation or Constraint? How Different Dimensions of Economic Globalization Affect Government Spending and Electoral Turnout.” *British Journal of Political Science* 45(2):353–389.
- Martin, Nathan D. and David Brady. 2007. “Workers of the Less Developed World Unite? A Multilevel Analysis of Unionization in Less Developed Countries.” *American Sociological Review* 72(4):562–584.
- Matthews, Dylan. 2013. “Study: Freer trade with China cut manufacturing employment by almost a third.” *Washington Post*.
- URL:** <https://www.washingtonpost.com/news/wonk/wp/2013/01/06/study-freer-trade-with-china-cut-manufacturing-employment-by-almost-a-third/>
- Mutz, Diana C. 2018. “Status threat, not economic hardship, explains the 2016 presidential vote.” *Proceedings of the National Academy of Sciences* 115(19):E4330–E4339.
- Oorschot, Wim van. 2000. “Who should get what, and why? On deservingness criteria and the conditionality of solidarity among the public.” *Policy & Politics* 28(1):33–48.
- Owen, John M. 2023. *The ecology of nations: American democracy in a fragile world order*. Yale University Press.
- Peter G. Peterson Foundation. 2025. “How Is K–12 Education Funded?” <https://www.pgpf.org/article/how-is-k-12-education-funded/>. Accessed: 2025-08-01.
- Petersen, Michael Bang, Rune Slothuus, Rune Stubager and Lise Togeby. 2011. “Deservingness

versus values in public opinion on welfare: The automaticity of the deservingness heuristic.” *European Journal of Political Research* 50(1):24–52.

Pew Research Center. 2012. “Partisan Polarization Surges in Bush, Obama Years.”.

URL: <https://www.pewresearch.org/wp-content/uploads/sites/4/legacy-pdf/06-04-12-Values-Release.pdf>

Pierson, Paul et al. 1997. *Path dependence, increasing returns, and the study of politics*. Minda de Gunzburg Center for European Studies, Harvard University.

Piketty, Thomas. 1995. “Social mobility and redistributive politics.” *The Quarterly journal of economics* 110(3):551–584.

Potrafke, Niklas. 2012. “Political cycles and economic performance in OECD countries: empirical evidence from 1951-2006.” *Public Choice* 150(1/2):155–179.

Rho, Sungmin and Michael Tomz. 2017. “Why Don’t Trade Preferences Reflect Economic Self-Interest?” *International Organization* 71(S1):S85–S108.

Rickard, Stephanie J. 2015. “Compensating the Losers: An Examination of Congressional Votes on Trade Adjustment Assistance.” *International Interactions* 41(1):46–60.

Rodrik, Dani. 1998. “Why do More Open Economies Have Bigger Governments?” *Journal of Political Economy* 106(5):997–1032.

Rodrik, Dani. 2017. “Populism and the Economics of Globalization.” *National Bureau of Economic Research*.

URL: <https://www.nber.org/papers/w23559>

Rudolph, Thomas J and Jillian Evans. 2005. “Political trust, ideology, and public support for government spending.” *American Journal of Political Science* 49(3):660–671.

Ruggie, John Gerard. 1982. “International regimes, transactions, and change: embedded liberalism in the postwar economic order.” *International organization* 36(2):379–415.

Scheve, Kenneth and Matthew J. Slaughter. 2004. "Economic Insecurity and the Globalization of Production." *American Journal of Political Science* 48(4):662–674.

Stokes, Bruce. 2018. "Spotlight on Views of Trade in the U.S., EU and Japan." <https://www.pewresearch.org/global/2018/09/26/spotlight-on-views-of-trade-in-the-u-s-eu-and-japan/>. Accessed: 2026-01-21.

Walter, Stefanie. 2010. "Globalization and the welfare state: Testing the microfoundations of the compensation hypothesis." *International Studies Quarterly* 54(2):403–426.

Appendix Contents

A	Appendix Items for Observational Results	A-4
A.1	Education spending data details	A-4
A.2	Models without federal revenue	A-5
A.1	Effect of Import Penetration on Education Spending less federal revenue (CCD Data), 1992-2022	A-6
A.3	Models with per capita education spending	A-6
A.2	Effect of Import Penetration on Per Capita Education Spending, 1992-2022	A-7
A.4	Interaction term models	A-7
A.3	Interaction Models (OLS): Import Penetration \times Dem-Majority	A-8
A.5	Outlier robustness	A-8
A.1	Effect of Imports, Gradually Excluding Higher-spending Outliers	A-9
A.2	Effect of Imports, Gradually Excluding Lower-spending Outliers	A-10
A.6	Clustering	A-10
A.4	Effect of Import Penetration on Education Spending (CCD), SEs clustered at the CZ level	A-11
A.7	Placebo test with lagged import penetration	A-11
A.5	Effect of Lagged Import Penetration on Spending Outcomes	A-12
A.8	Rolling windows by party	A-13
A.3	Effect of Imports, varying the sample by range of vote shares	A-13
A.9	County level analysis	A-13
A.4	Annualized Percent Change in Education Spending (CCD Data), 1992-2012 and 2012-2022, versus Exposure to Chinese Imports, County level	A-14
A.6	Effect of Import Penetration on Education Spending (CCD Data), 1992-2022, county level	A-15
A.10	Excluding vocational spending	A-15

A.7	Effect of Import Penetration on Education Spending (CCD Data), 1992-2022, No vocational expenses	A-16
A.8	Effect of Import Penetration on Education Spending (CCD Data), 1992-2022, only total current elementary/secondary	A-17
B	Appendix Items for Experimental Results	A-18
B.1	Results without controls	A-18
A.5	Effect of Trade Treatment, pooled sample without controls	A-18
B.2	Intercepts and Changes	A-18
A.6	Predicted values, pooled sample with controls	A-19
A.7	Predicted values, pooled sample without controls	A-19
A.9	Effect of Trade Treatment on Social Outcomes (With Controls)	A-20
A.10	Effect of Trade Treatment on Social Outcomes (No Controls)	A-21
A.11	Party-Specific Effects of Trade Treatment on Redistribution Preferences	A-21
B.3	Specification Robustness: Control variables	A-22
A.8	Specification curve estimates for social investment and transfers	A-22
B.4	Specification robustness: Binary DV models	A-22
B.5	Differences between the two surveys	A-22
A.12	Effect of Trade Treatment on Social Outcomes (Logit, With Controls)	A-23
A.13	Effect of Trade Treatment on Social Outcomes (Logit, No Controls)	A-24
B.6	Results for two surveys, not pooled	A-24
A.9	Effect of Trade Treatment, Lucid sample without controls	A-25
A.10	Effect of Trade Treatment, AIC sample without controls	A-25
B.7	Balance and sensitivity	A-26
A.11	Sensitivity plot	A-27
A.14	Covariate Balance Across Treatment Groups	A-28
C	Appendix Items for Automation Analysis	A-28

A.12 Effect of Automation Treatment on Outcomes, no controls A-30
A.13 Effect of Automation Treatment on Outcomes, with controls A-30

A Appendix Items for Observational Results

A.1 Education spending data details

The NCES education spending data contain information on lots of types of education spending. The measure of spending that we use in the main analyses (TOTALEXP) is the sum of the following items. In robustness checks below, we also limit expenditures to total current expenditures on elementary and secondary education (TCURELSC).

- TCURELSC: Total Current Expenditure for Elementary/Secondary Education, which entails Expenditure for Instruction (TCURINST), Support Services (TCURSSVC), and Other Elementary/Secondary Programs (TCUROTH). Includes salaries, employee benefits, purchased services, and supplies, as well as payments made by states on behalf of school districts. Also includes transfers made by school districts into their own retirement system
- TNONELSE: Total Non-Elementary/Secondary Expenditures which entails Community Services (V70), Adult Education (V75) and Others (V80).
- TCAPOUT: TOTAL CAPITAL OUTLAY EXPENDITURES which includes expenditures for construction (F12), land and existing structures (G15), instructional (K09), other (K10) and non-specified (K10) equipment.
- L12, M12: Payments to State Governments, to Local Governments.
- Q11: Payments to other school systems.
- I86: Interest on debt.
- V91: Payments to Private Schools.
- V92: Payments to Charter Schools.

In some of the robustness checks below, we calculated expenditures minus federal or state revenues. Federal revenues (TFEDREV) included federal revenues that are distributed to schools

through the state, revenues directly given to schools, and money from specific acts or programs like the CARES Act or COVID funds. Total state revenue (TSTREV) includes things like standardized formula assistance (eg money based on a state's per student formula) and other more specific funds, like those for bilingual education or gifted programs.

For per capita amounts, we used the count of students served by the particular school (V33). This is the count that NCES uses to calculate their per pupil amounts.

A.2 Models without federal revenue

In the main manuscript, we used total education spending at the local level as the primary outcome variable, and then spending less federal and state revenue. Here, we use total spending minus federal revenue only (Table A.1). All of the signs and statistical significance of the main results and the results less federal and state revenue are the same. In terms of magnitude, the coefficients are more similar to the main results, suggesting that removing state revenue drives a larger portion of the increased magnitude in Table 2.

Table A.1: Effect of Import Penetration on Education Spending less federal revenue (CCD Data), 1992-2022

	(1)	(2)	(3)	(4)	(5)	(6)
	OLS Full	2SLS Full	OLS Dem	2SLS Dem	OLS Rep	2SLS Rep
Δ Im. Pen.	3.32*** (0.86)	5.93*** (1.32)	4.03*** (1.37)	6.68*** (2.21)	2.83** (1.10)	5.65*** (1.61)
1992-2012	3.60*** (0.60)	3.39*** (0.60)	2.73*** (0.49)	2.46*** (0.52)	1.92*** (0.46)	1.52*** (0.49)
2012-2022	2.20*** (0.59)	2.20*** (0.59)	1.40*** (0.47)	1.36*** (0.47)	0.48 (0.44)	0.28 (0.44)
Dem. 1992 Pct	-1.33* (0.69)	-1.42** (0.69)				
Sample	All CZs	All CZs	Dem. CZs	Dem. CZs	Rep. CZs	Rep. CZs
Observations	1,444	1,444	700	700	744	744

Standard errors in parentheses

* $p < 0.10$, ** $p < 0.05$, *** $p < 0.01$

A.3 Models with per capita education spending

To compute per capita expenditures, we used population data from Census Population estimates at the county-level and aggregated it up to the CZ level. For the 2022 observations, we used the 5-year American Community Survey estimates. Table A.2 shows the results from replicating the main specifications with per capita expenditures as the dependent variable. Import penetration has a positive, nearly always significant effect on per capita education expenditures.

Table A.2: Effect of Import Penetration on Per Capita Education Spending, 1992-2022

	(1)	(2)	(3)	(4)	(5)	(6)
	OLS Full	2SLS Full	OLS Dem	2SLS Dem	OLS Rep	2SLS Rep
Δ Im. Pen.	1.45** (0.73)	2.42** (1.12)	2.13* (1.19)	3.35* (1.91)	1.27 (0.91)	2.18* (1.32)
1992-2012	2.00*** (0.51)	1.93*** (0.52)	2.00*** (0.43)	1.87*** (0.45)	1.78*** (0.38)	1.65*** (0.40)
2012-2022	1.59*** (0.51)	1.59*** (0.51)	1.67*** (0.41)	1.65*** (0.41)	1.33*** (0.36)	1.27*** (0.36)
Dem. 1992 Pct	0.13 (0.59)	0.10 (0.59)				
Sample	All CZs	All CZs	Dem. CZs	Dem. CZs	Rep. CZs	Rep. CZs
Observations	1,443	1,443	699	699	744	744

Standard errors in parentheses

* $p < 0.10$, ** $p < 0.05$, *** $p < 0.01$

A.4 Interaction term models

In the main manuscripts, we used split sample regressions by party. Table A.3 shows the same OLS regression, but with a binary indicator for whether a CZ voted Democratic in the 1992 election and an interaction term. The binary indicator equals one if the average vote share across the counties in the CZ was greater than 50%. Each column shows one of the spending measures from above, the CCD education spending data, the Census education spending data, then the Census police and fire spending measures.

The results show the same things as in the split sample regressions. Greater exposure to import penetration increased education spending. The effect was slightly larger in Democratic CZs, but we can't reject the null of no difference in effects. Also, as above, import penetration is not associated with increased police/fire spending, in either type of CZ.

Table A.3: Interaction Models (OLS): Import Penetration \times Dem-Majority

	Education (NCES)	Education (Census)	Police and Fire
	(1)	(2)	(3)
	OLS	OLS	OLS
Δ Imp. Pen.	2.69***	2.45***	-0.50
	(1.03)	(0.88)	(1.85)
Δ Imp. Pen. \times Dem.	0.88	1.88	1.91
	(1.38)	(1.17)	(2.47)
Dem. Maj. (> 0.5)	-0.32**	-0.45***	-0.81***
	(0.15)	(0.13)	(0.27)
1992–2012	3.22***	2.80***	1.43*
	(0.44)	(0.37)	(0.78)
2012–2022	2.18***	1.43***	-0.51
	(0.43)	(0.37)	(0.77)
Observations	1,444	1,444	1,435

Standard errors in parentheses

* $p < 0.10$, ** $p < 0.05$, *** $p < 0.01$

A.5 Outlier robustness

In the main manuscripts, we used the full sample for all of our regressions. It is possible that certain commuting zones that spent a lot or a little in initial time periods could show larger or smaller annualized growth in spending. The starting level of spending for a CZ could influence its trajectory in a deterministic way. We use the CZ’s education spending level in 1992, the start of our analysis period, as the measure of initial spending levels.

Here, we show that the results are not sensitive to excluding observations based on their education spending levels. Rather than choose one cutoff above or below which to exclude observations, we show the robustness of estimates to many potential cutoffs. The plots below exclude observations that are above a certain threshold or below a certain threshold, and they gradually shift the threshold. We show this for all four of the dependent variables considered above.

Figure A.1 shows the estimated effect of import penetration as we gradually remove observations that are outliers on the higher end of the spending distribution. Each point on the x-axis indicates a particular percentile threshold. For example, the when the x-axis is 75, the corresponding estimate is from a regression where we exclude CZs that are in the 75th percentile or higher

in terms of their initial spending. The sample size therefore gets smaller as we move from right to left. It ranges from 100, which excludes only the very top percentile of CZs in terms of their 1992 spending, down to 50, which excludes every CZ above the median spending level.

Figure A.2 shows the same thing, only it gradually excludes lower end observations. For example, when the x-axis is 25, the corresponding estimate comes from a regression that excludes any CZ that is in the 25th percentile or below.

The results are consistent. The effect on both education spending measures is always positive and nearly always significant. The only places where the coefficient is not significant at the 95% level is when the cutoff excludes the bottom 30th percentile or more from the sample. These results used the OLS specifications. With the 2SLS specifications, these results are generally stronger. The effects on police and fire remain insignificant for every subsample.

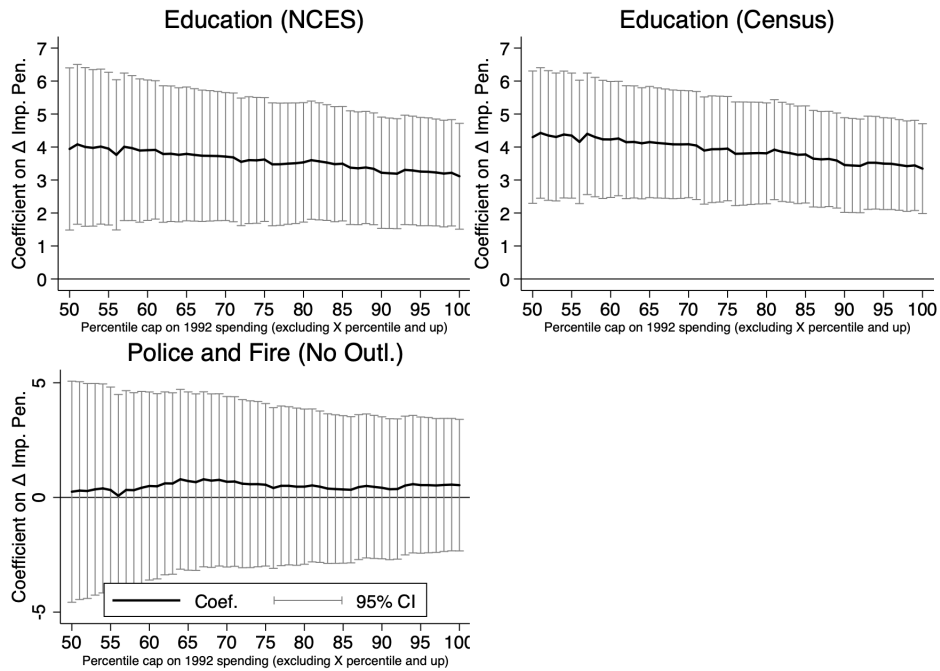


Figure A.1: Effect of Imports, Gradually Excluding Higher-spending Outliers

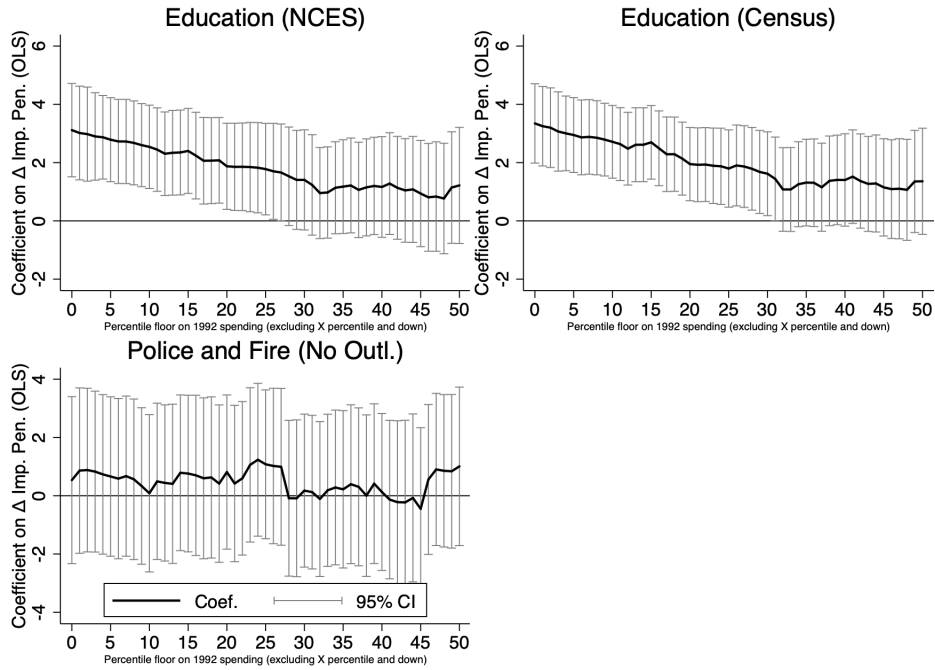


Figure A.2: Effect of Imports, Gradually Excluding Lower-spending Outliers

A.6 Clustering

The main manuscript showed results from regressions without any clustering structure to the standard errors. Results are very similar when we cluster at the CZ level. Table A.4 shows the results for the main education spending regressions.

Table A.4: Effect of Import Penetration on Education Spending (CCD), SEs clustered at the CZ level

	(1)	(2)	(3)	(4)	(5)	(6)
	OLS Full	2SLS Full	OLS Dem	2SLS Dem	OLS Rep	2SLS Rep
Δ Im. Pen.	3.11*** (0.62)	5.26*** (1.10)	3.76*** (0.87)	5.80*** (1.81)	2.66*** (0.87)	5.12*** (1.43)
1992-2012	3.49*** (0.54)	3.32*** (0.54)	2.85*** (0.41)	2.64*** (0.45)	2.20*** (0.25)	1.86*** (0.30)
2012-2022	2.44*** (0.52)	2.44*** (0.52)	1.90*** (0.39)	1.87*** (0.39)	1.09*** (0.21)	0.92*** (0.23)
Dem. 1992 Pct	-0.93 (0.62)	-1.00 (0.62)				
Observations	1,444	1,444	700	700	744	744

Standard errors in parentheses

* $p < 0.10$, ** $p < 0.05$, *** $p < 0.01$

*** : $p < 0.01$.

A.7 Placebo test with lagged import penetration

As a placebo test, we looked at whether lagged import penetration was associated with spending in the second time period. Specifically, we regress spending changes in the second time period (2012-2022) on the import penetration measure from the first time period (1992-2012).

Table A.5 shows the results. Lagged imports do not explain second period education spending. They also do not explain second period police and fire spending.

Table A.5: Effect of Lagged Import Penetration on Spending Outcomes

	(1)	(2)	(3)	(4)	(5)	(6)
	OLS Full	IV Full	OLS Dem	IV Dem	OLS Rep	IV Rep
DV: Education (CCD)						
Δ Im. Pen. (lag)	-0.42 (1.06)	-0.83 (1.28)	-0.84 (1.68)	-0.47 (1.98)	1.09 (1.24)	0.83 (1.45)
Dem. 1992 Pct	0.90 (0.76)	0.95 (0.76)				
Observations	722	722	350	350	372	372
DV: Education (Census)						
Δ Im. Pen. (lag)	0.52 (0.82)	0.22 (0.98)	0.43 (1.00)	0.41 (1.18)	0.89 (1.21)	0.60 (1.42)
Dem. 1992 Pct	-0.89 (0.59)	-0.85 (0.59)				
Observations	722	722	350	350	372	372
DV: Pol./Fire (Census, no outl.)						
Δ Im. Pen. (lag)	1.73 (1.78)	2.21 (2.13)	0.46 (1.94)	1.66 (2.28)	0.62 (2.79)	-0.25 (3.28)
Dem. 1992 Pct	-3.43*** (1.28)	-3.49*** (1.28)				
Observations	719	719	349	349	370	370

Note: Standard errors in parentheses. *** $p < 0.01$

A.8 Rolling windows by party

Figure A.3 shows estimates of the effect of our import penetration measure on education spending (NCES) as we vary the sample, by vote shares. The estimates are based on rolling windows of width 0.2. For example, at the point 0.5 on the horizontal axis, the coefficient shown is the estimate when we restrict the sample to include only CZs that had a Democratic vote share between 0.4 and 0.6, i.e. 0.5 plus or minus .1. The confidence intervals naturally get wider as we get into either tail of the vote share distribution, because the sample sizes are shrinking. Overall, the coefficients are stable, positive, and significant. There is a rise only in the most extremely Democratic CZs.

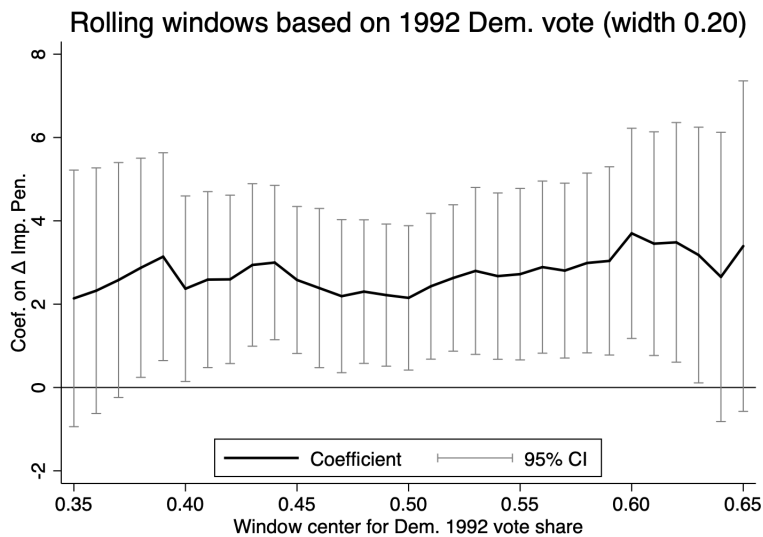


Figure A.3: Effect of Imports, varying the sample by range of vote shares

A.9 County level analysis

Figure A.4 reproduces Figure 6 with observations at the county level. There are, by definition, more counties than CZs and many have larger absolute values of both the expenditure and import penetration measures. Though, as above, the general correlation for both Republican and Democrat counties are positive.

Table A.6 reproduces Table 1 using the county level observations and local level spending,

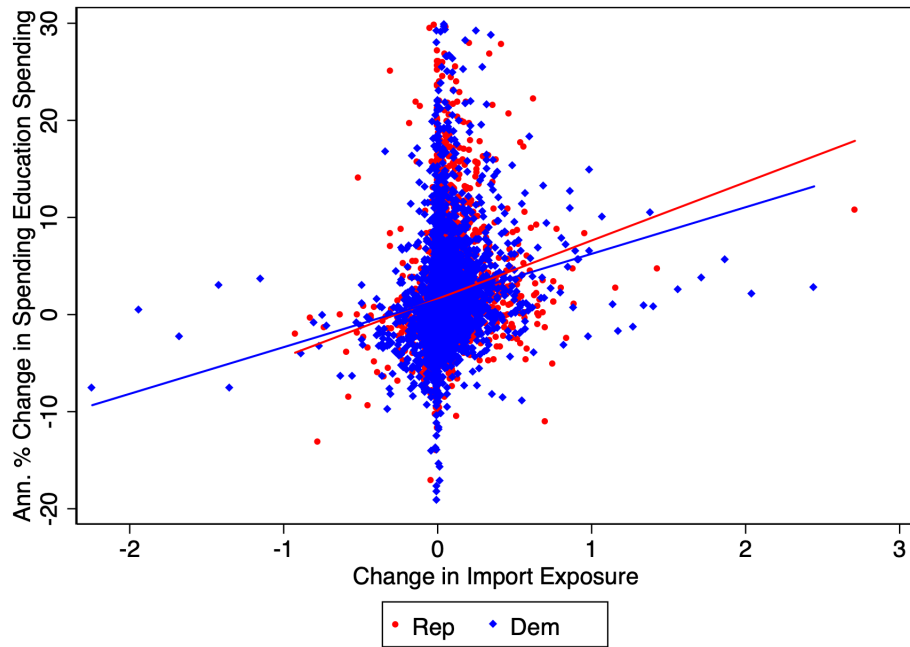


Figure A.4: Annualized Percent Change in Education Spending (CCD Data), 1992-2012 and 2012-2022, versus Exposure to Chinese Imports, County level

excluding state and federal. The only difference worth highlighting is that, for one of the specifications, the coefficient on import penetration is insignificant at for Republican counties, though the coefficient remains positive.

Table A.6: Effect of Import Penetration on Education Spending (CCD Data), 1992-2022, county level

	(1)	(2)	(3)	(4)	(5)	(6)
	OLS Full	2SLS Full	OLS Dem	2SLS Dem	OLS Rep	2SLS Rep
Δ Im. Pen.	2.23*** (0.65)	5.40*** (1.00)	3.67*** (1.27)	5.76*** (2.07)	0.51 (0.98)	5.56*** (1.37)
1992–2012	3.89*** (0.50)	3.53*** (0.51)	3.18*** (0.37)	2.90*** (0.42)	3.98*** (0.23)	3.42*** (0.25)
2012–2022	0.89* (0.50)	0.92* (0.50)	0.74** (0.33)	0.75** (0.33)	0.74*** (0.20)	0.70*** (0.20)
Dem. 1992 Pct	-0.38 (0.96)	-0.44 (0.96)				
Sample	All CZs	All CZs	Dem. CZs	Dem. CZs	Rep. CZs	Rep. CZs
Observations	6,188	6,188	3,065	3,065	3,162	3,162

Standard errors in parentheses

* $p < 0.10$, ** $p < 0.05$, *** $p < 0.01$

A.10 Excluding vocational spending

In the main results, we reported the effect of import penetration on total spending, which included vocational spending. The CCD data break out spending by "school level." One of the school level codes indicates spending on "Vocational" schools and programs. In practice, vocational spending is a very small portion of most expenses.

We re-created the education spending variable excluding all of these expenses and re-estimated the main regressions. Table A.7 replicates the main regression table (Table 1), excluding vocational school expenses. The results are very similar and the key conclusions are the same.

The CCD Data also have a separate category that classifies spending that is only the total, current spending for elementary and secondary education ("toureisc"). Not every county for every year reports vocational spending, which could be because they didn't spend money on vocational expenses or because they didn't categorize spending in a particularly disaggregated way. Here, we replicate the analysis again, using the spending amount that is only classified as being for

Table A.7: Effect of Import Penetration on Education Spending (CCD Data), 1992-2022, No vocational expenses

	(1)	(2)	(3)	(4)	(5)	(6)
	OLS Full	2SLS Full	OLS Dem	2SLS Dem	OLS Rep	2SLS Rep
Δ Im. Pen.	3.04*** (0.82)	4.94*** (1.26)	3.71*** (1.27)	5.45*** (2.05)	2.54** (1.09)	4.79*** (1.59)
1992-2012	3.52*** (0.57)	3.37*** (0.58)	2.91*** (0.45)	2.74*** (0.48)	2.28*** (0.45)	1.97*** (0.48)
2012-2022	2.34*** (0.57)	2.34*** (0.57)	1.83*** (0.43)	1.80*** (0.43)	1.03** (0.43)	0.88** (0.44)
Dem. 1992 Pct	-0.88 (0.66)	-0.94 (0.66)				
Sample	All CZs	All CZs	Dem. CZs	Dem. CZs	Rep. CZs	Rep. CZs
Observations	1,444	1,444	700	700	744	744

Standard errors in parentheses

* $p < 0.10$, ** $p < 0.05$, *** $p < 0.01$

elementary and secondary education. Results are again similar, as in Table A.8.

Table A.8: Effect of Import Penetration on Education Spending (CCD Data), 1992-2022, only total current elementary/secondary

	(1)	(2)	(3)	(4)	(5)	(6)
	OLS Full	2SLS Full	OLS Dem	2SLS Dem	OLS Rep	2SLS Rep
Δ Im. Pen.	3.32*** (0.57)	5.53*** (0.88)	3.63*** (0.80)	4.87*** (1.29)	3.01*** (0.83)	6.11*** (1.23)
1992-2012	3.90*** (0.40)	3.72*** (0.40)	3.04*** (0.28)	2.91*** (0.30)	1.94*** (0.35)	1.50*** (0.37)
2012-2022	2.67*** (0.40)	2.67*** (0.40)	1.68*** (0.27)	1.66*** (0.27)	0.83** (0.33)	0.62* (0.34)
Dem. 1992 Pct	-1.53*** (0.46)	-1.60*** (0.46)				
Sample	All CZs	All CZs	Dem. CZs	Dem. CZs	Rep. CZs	Rep. CZs
Observations	1,444	1,444	700	700	744	744

Standard errors in parentheses

* $p < 0.10$, ** $p < 0.05$, *** $p < 0.01$

B Appendix Items for Experimental Results

B.1 Results without controls

The main manuscript (Figure 2) showed estimated effects with control variables included in the regression. Figure A.5 shows the same results, without control variables. The results are very similar.

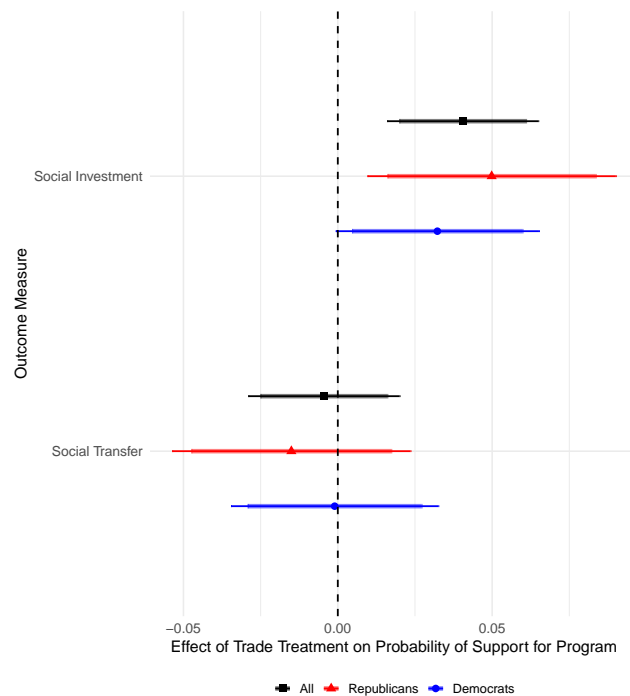


Figure A.5: Effect of Trade Treatment, pooled sample without controls

B.2 Intercepts and Changes

The main manuscript only showed the estimated treatment effects. Figure A.6 and Figure A.7 show the predicted levels of support for different policies under treatment and control. The left hand side pool all respondents. The middle and right columns split them into Democrats and Republicans respectively. The first figure shows these predictions from regressions with controls, the second without.

Results are similar to both and as expected. Social investment is more popular overall, compared to social assistance. Democrats support both at higher levels than Republicans. The regression tables for these estimates are then shown below in Table A.9 and Table A.10.

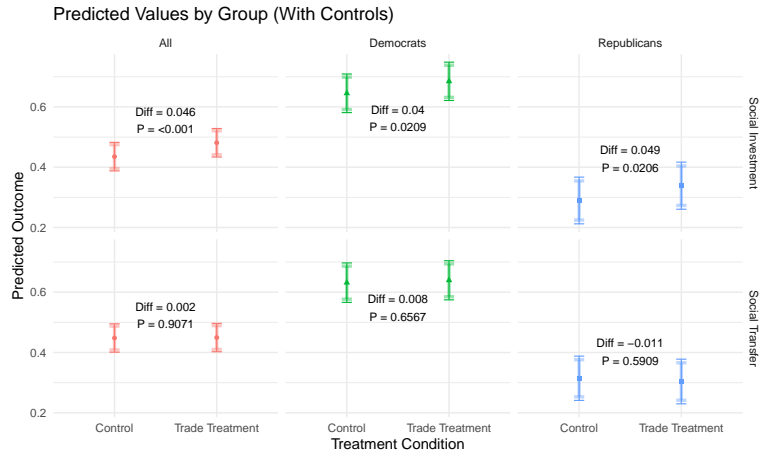


Figure A.6: Predicted values, pooled sample with controls

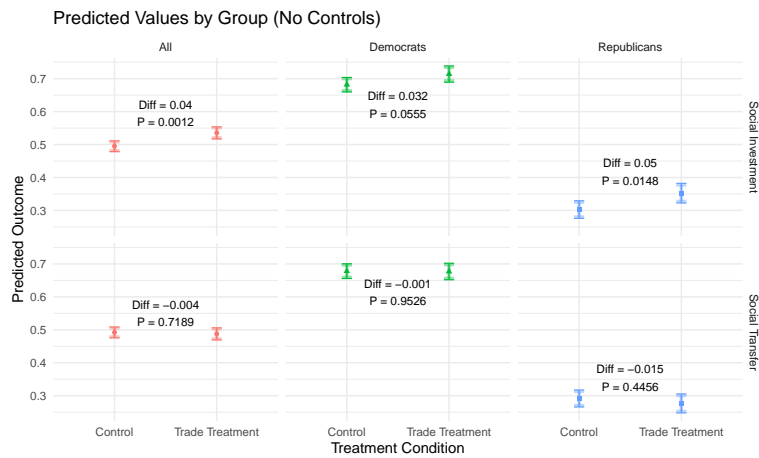


Figure A.7: Predicted values, pooled sample without controls

These split sample results are also robust to interaction term models, in which we also include Independents as a separate category, as in Table A.11.

Table A.9: Effect of Trade Treatment on Social Outcomes (With Controls)

	<i>Dependent variable:</i>					
	Social Investment			Social Transfer		
	All	Rep.	Dem.	All	Rep.	Dem.
Trade. Tmt.	0.05*** (0.01)	0.05** (0.02)	0.04** (0.02)	0.002 (0.01)	-0.01 (0.02)	0.01 (0.02)
Age	-0.002*** (0.0004)	-0.003*** (0.001)	-0.0002 (0.001)	-0.003*** (0.0004)	-0.01*** (0.001)	-0.001** (0.001)
Female	-0.02* (0.01)	-0.02 (0.02)	-0.07*** (0.02)	0.02 (0.01)	0.01 (0.02)	-0.05*** (0.02)
Has Kids	-0.03** (0.01)	0.05** (0.02)	-0.04* (0.02)	-0.03** (0.01)	0.06** (0.02)	-0.06*** (0.02)
Working	-0.004 (0.01)	0.02 (0.02)	-0.01 (0.02)	-0.02 (0.01)	0.01 (0.02)	-0.01 (0.02)
HHI > med.	0.03** (0.01)	0.01 (0.02)	0.05** (0.02)	-0.04** (0.01)	-0.08*** (0.02)	-0.0002 (0.02)
BA or higher	0.10*** (0.01)	-0.03 (0.02)	0.11*** (0.02)	0.08*** (0.01)	-0.02 (0.02)	0.09*** (0.02)
Midwest	-0.05** (0.02)	-0.09** (0.03)	-0.02 (0.03)	-0.06*** (0.02)	-0.09*** (0.03)	-0.02 (0.03)
South	-0.05** (0.02)	-0.05 (0.03)	0.02 (0.02)	-0.06*** (0.02)	-0.06** (0.03)	0.02 (0.02)
West	-0.05** (0.02)	-0.03 (0.04)	-0.03 (0.03)	-0.05** (0.02)	-0.08** (0.03)	0.01 (0.03)
Hispanic	-0.01 (0.01)	-0.01 (0.02)	0.02 (0.02)	-0.02 (0.01)	-0.02 (0.02)	-0.01 (0.02)
White	-0.01 (0.02)	-0.03 (0.03)	0.08*** (0.02)	-0.04** (0.02)	-0.03 (0.03)	0.07*** (0.02)
Black	0.10*** (0.02)	0.13** (0.05)	-0.003 (0.03)	0.13*** (0.02)	0.18*** (0.05)	0.05** (0.03)
Constant	0.60*** (0.03)	0.54*** (0.06)	0.63*** (0.04)	0.72*** (0.03)	0.68*** (0.06)	0.70*** (0.04)
Observations	6,005	1,977	2,828	6,003	1,976	2,827
R ²	0.02	0.04	0.04	0.04	0.08	0.02
Adjusted R ²	0.02	0.04	0.03	0.03	0.08	0.02

Note:

*p<0.1; **p<0.05; ***p<0.01

Table A.10: Effect of Trade Treatment on Social Outcomes (No Controls)

	<i>Dependent variable:</i>					
	Social Investment			Social Transfer		
	All	Rep.	Dem.	All	Rep.	Dem.
Trade. Tmt.	0.04*** (0.01)	0.05** (0.02)	0.03* (0.02)	-0.004 (0.01)	-0.02 (0.02)	-0.001 (0.02)
Constant	0.49*** (0.01)	0.30*** (0.01)	0.68*** (0.01)	0.49*** (0.01)	0.29*** (0.01)	0.68*** (0.01)
Observations	6,490	2,125	3,023	6,488	2,124	3,022
R ²	0.002	0.003	0.001	0.0000	0.0003	0.0000
Adjusted R ²	0.001	0.002	0.001	-0.0001	-0.0002	-0.0003

Note:

*p<0.1; **p<0.05; ***p<0.01

Table A.11: Party-Specific Effects of Trade Treatment on Redistribution Preferences

	<i>Dependent variable:</i>			
	Transfers		Soc. Investment	
	Transfers (No Ctrl)	Transfers (+Ctrls)	Social Inv. (No Ctrl)	Social Inv. (+Ctrls)
	(1)	(2)	(3)	(4)
Democrat	0.273*** (0.052)	0.248*** (0.059)	0.372*** (0.052)	0.340*** (0.059)
Republican	-0.113** (0.053)	-0.113* (0.059)	-0.007 (0.053)	-0.030 (0.060)
Independent	-0.014 (0.054)	-0.036 (0.060)	0.072 (0.054)	0.055 (0.061)
Trade x Dem.	-0.001 (0.017)	0.013 (0.018)	0.032* (0.017)	0.044** (0.018)
Trade x Rep.	-0.015 (0.020)	-0.010 (0.021)	0.050** (0.020)	0.053** (0.021)
Trade x Ind.	0.004 (0.027)	-0.002 (0.028)	0.051* (0.027)	0.045 (0.028)
Constant	0.405*** (0.051)	0.627*** (0.064)	0.310*** (0.051)	0.421*** (0.064)
Observations	6,488	6,003	6,490	6,005
R ²	0.129	0.142	0.122	0.129
Adjusted R ²	0.128	0.140	0.121	0.127

Note:

*p<0.1; **p<0.05; ***p<0.01

B.3 Specification Robustness: Control variables

The results are very robust to different specifications that use combinations of control variables. In fact, for every single permutation, the coefficient on the trade treatment is insignificant and near zero for the social transfers outcome measure. And for every single specification, the coefficient is positive and significant for the social investment outcome. The coefficients tend to cluster based on whether race variables are included.

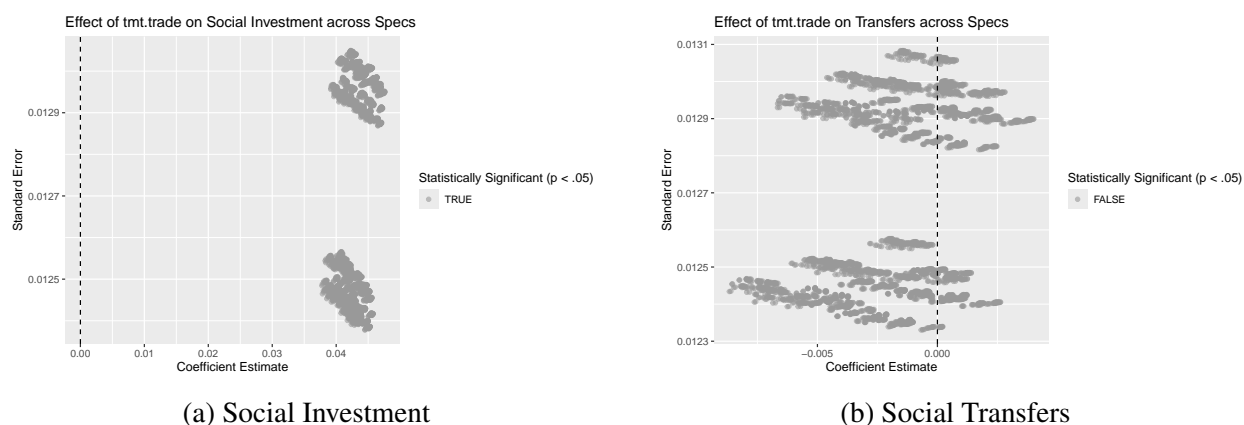


Figure A.8: Specification curve estimates for social investment and transfers

B.4 Specification robustness: Binary DV models

Table A.12 and Table A.13 replicate the main regressions, using logit instead of OLS, with and without controls. The results are again very similar to those using OLS. Results are very similar with probit too, in terms of sign, significance, and interpretation.

B.5 Differences between the two surveys

There were some minor differences between the two surveys. For example, in the Lucid survey, we included a second treatment condition that asked respondents about automation. Every aspect of the treatment was the same, except the first sentence read “*Many US companies have increased their use of automation technology. They have replaced workers with advanced robots or used*

Table A.12: Effect of Trade Treatment on Social Outcomes (Logit, With Controls)

	<i>Dependent variable:</i>					
	Social Investment			Social Transfer		
	(1)	(2)	(3)	(4)	(5)	(6)
Trade. Tmt.	0.19*** (0.05)	0.23** (0.10)	0.20** (0.08)	0.01 (0.05)	-0.06 (0.11)	0.04 (0.08)
Age	-0.01*** (0.002)	-0.02*** (0.003)	-0.001 (0.003)	-0.01*** (0.002)	-0.03*** (0.004)	-0.01** (0.003)
Female	-0.09* (0.05)	-0.08 (0.10)	-0.34*** (0.09)	0.06 (0.05)	0.07 (0.11)	-0.22*** (0.08)
Has Kids	-0.13** (0.06)	0.25** (0.11)	-0.18* (0.10)	-0.14** (0.06)	0.30*** (0.11)	-0.30*** (0.09)
Working	-0.02 (0.06)	0.10 (0.11)	-0.04 (0.10)	-0.07 (0.06)	0.09 (0.12)	-0.05 (0.10)
HHI > med.	0.12** (0.06)	0.03 (0.11)	0.23** (0.10)	-0.15** (0.06)	-0.42*** (0.12)	-0.004 (0.10)
BA or higher	0.40*** (0.06)	-0.12 (0.11)	0.52*** (0.09)	0.33*** (0.06)	-0.13 (0.12)	0.42*** (0.09)
Midwest	-0.20** (0.08)	-0.40** (0.16)	-0.12 (0.13)	-0.23*** (0.08)	-0.47*** (0.17)	-0.09 (0.13)
South	-0.19** (0.08)	-0.21 (0.15)	0.08 (0.12)	-0.25*** (0.08)	-0.32** (0.15)	0.11 (0.12)
West	-0.19** (0.08)	-0.14 (0.17)	-0.13 (0.13)	-0.20** (0.09)	-0.42** (0.18)	0.05 (0.13)
Hispanic	-0.05 (0.06)	-0.08 (0.11)	0.10 (0.09)	-0.09 (0.06)	-0.11 (0.11)	-0.03 (0.09)
White	-0.06 (0.06)	-0.15 (0.13)	0.41*** (0.10)	-0.14** (0.06)	-0.15 (0.14)	0.34*** (0.10)
Black	0.40*** (0.09)	0.52** (0.23)	-0.01 (0.12)	0.54*** (0.09)	0.75*** (0.24)	0.25** (0.12)
Constant	0.42*** (0.14)	0.26 (0.28)	0.55*** (0.21)	0.92*** (0.14)	0.97*** (0.29)	0.86*** (0.21)
Observations	6,005	1,977	2,828	6,003	1,976	2,827
Log Likelihood	-4,084.37	-1,211.48	-1,681.75	-4,053.60	-1,114.38	-1,736.66

Note:

*p<0.1; **p<0.05; ***p<0.01

Table A.13: Effect of Trade Treatment on Social Outcomes (Logit, No Controls)

	<i>Dependent variable:</i>					
	Social Investment			Social Transfer		
	(1)	(2)	(3)	(4)	(5)	(6)
Trade. Tmt.	0.16*** (0.05)	0.23** (0.09)	0.15* (0.08)	-0.02 (0.05)	-0.07 (0.10)	-0.005 (0.08)
Constant	-0.02 (0.03)	-0.84*** (0.06)	0.76*** (0.05)	-0.03 (0.03)	-0.89*** (0.06)	0.75*** (0.05)
Observations	6,490	2,125	3,023	6,488	2,124	3,022
Log Likelihood	-4,491.15	-1,336.56	-1,854.94	-4,495.81	-1,268.73	-1,899.61

Note:

* $p < 0.1$; ** $p < 0.05$; *** $p < 0.01$

software and artificial intelligence to do the jobs once done by workers.”. The final condition was a control condition, where respondents were not asked to write about anything.

There are also some small differences in the control variables vector. For example, in the YouGov data, there is not a home ownership question. YouGov also asks “how many children under 18 live in your household” and the Lucid survey included a question about whether the respondent had kids.

B.6 Results for two surveys, not pooled

The main manuscript showed results from pooling the data from the two surveys. Results are very similar when analyzing each survey individually. Figure A.9 and Figure A.10 show the estimated treatment effects for the Lucid and AIC surveys individually, without controls. The only difference worth flagging is that the treatment effects are not as strongly significant in the Democratic respondent subsamples. They are still positive, but the magnitude of the effect in the Lucid sample is not as large and is insignificant.

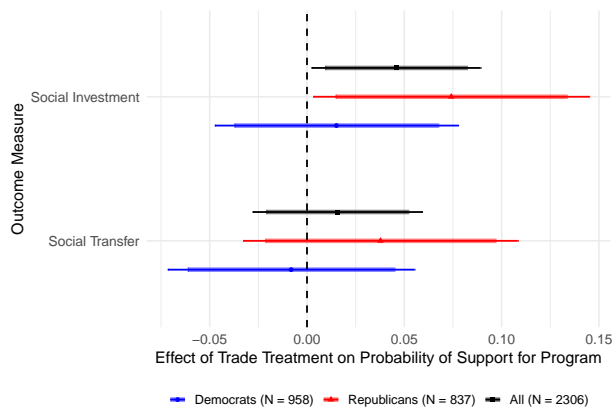


Figure A.9: Effect of Trade Treatment, Lucid sample without controls

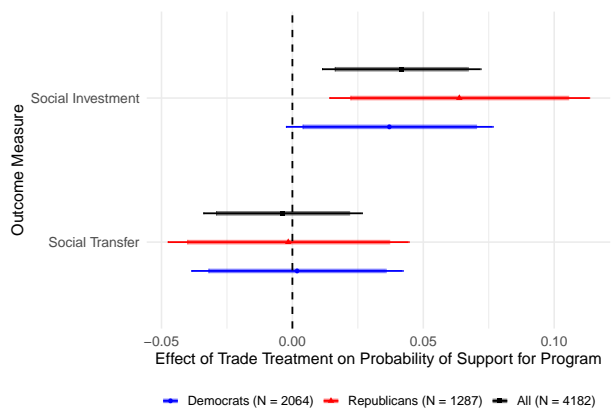


Figure A.10: Effect of Trade Treatment, AIC sample without controls

B.7 Balance and sensitivity

Table A.14 shows balance tests to assess whether respondents were similar along observable characteristics, in the treatment and control groups. We use the approach described in Hansen and Bowers (2008). There are some differences in the control and treatment groups. For example, the average age in the treatment group is 1.2 years lower than in the control group.

These differences are statistically different from zero in some cases, but they are extremely unlikely to affect inferences. Imbalance in these observables is unlikely to affect results since we can show similar effects with and without controlling for each of these characteristics.

It is also possible that if our sample is imbalanced in some observables, that there are also unobservables that are imbalanced across treatment and control groups. This potential imbalance is also extremely unlikely to affect our estimates. Cinelli and Hazlett (2020) and Chaudoin, Hays and Hicks (2018) describe approaches to sensitivity testing in the presence of unobservables. We use the approach described in the former to assess how bad imbalance in unobservables would need to be, relative to observables, in order to drive treatment effects to zero. The contour plot in Figure A.11 shows this thought exercise. An unobservable would need to be approximately four times as imbalanced compared to our binary indicator for Hispanic respondents (which was our most imbalanced covariate) *and* that observable would have to have a similar effect as party identification, in order to drive our estimated effect for treatment on support for social investment to zero. This is extremely unlikely.

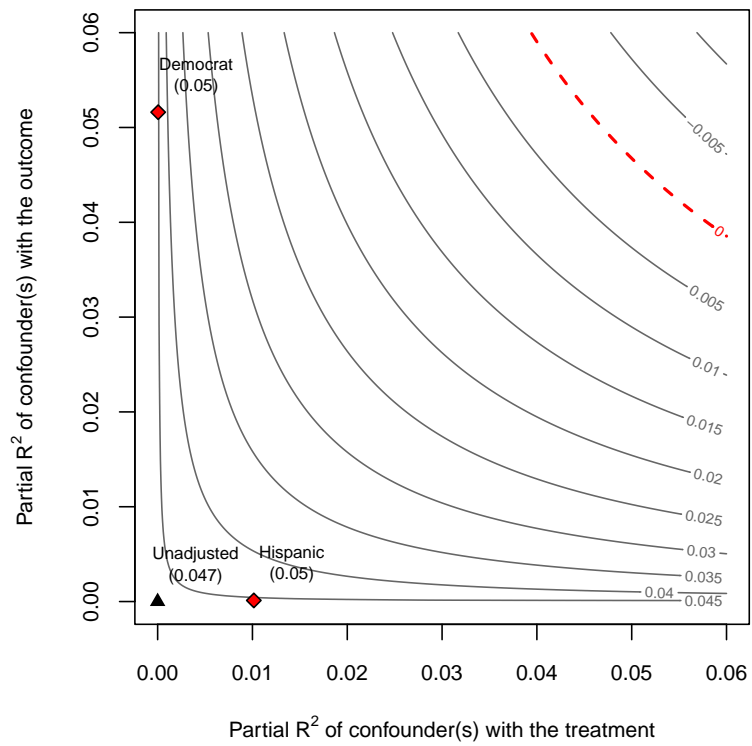


Figure A.11: Sensitivity plot

Table A.14: Covariate Balance Across Treatment Groups

Variable	Control Mean	Treatment Mean	Diff	Std. Diff	t-stat	Signif.
pidind	0.195	0.204	-0.00871	-0.02	-0.84	
pidrep	0.332	0.327	0.00516	0.01	0.42	
piddem	0.473	0.469	0.00355	0.01	0.27	
age	51.6	50.4	1.12	0.07	2.56	*
female	0.515	0.521	-0.00623	-0.01	-0.48	
haskids	0.305	0.354	-0.0492	-0.11	-4.01	***
working	0.513	0.531	-0.0186	-0.04	-1.43	
hhi.abovemed	0.319	0.309	0.00994	0.02	0.82	
baorhigher	0.407	0.433	-0.0254	-0.05	-1.98	*
region.midwest	0.231	0.226	0.00419	0.01	0.38	
region.south	0.360	0.373	-0.0124	-0.03	-0.99	
region.west	0.233	0.231	0.00172	0.00	0.16	
hispanic.bin	0.649	0.539	0.110	0.23	8.61	***
white.bin	0.571	0.600	-0.0298	-0.06	-2.33	*
black.bin	0.158	0.157	0.000591	0.00	0.06	

C Appendix Items for Automation Analysis

Does automation trigger the same reactions as globalization? A full exploration of this is beyond the scope of our current paper, but initial results suggest that there is more support for social investment as a response to automation than for social assistance. The patterns we see in reactions to automation are similar to those we found for globalization, though they are generally not as stark.

In the 2023 Lucid survey, we also included a treatment that asked about automation.⁶⁵ It was very similar to the trade treatment:

Many US companies have increased their use of automation technology. They have replaced workers with advanced robots or used software and artificial intelligence to do the jobs once done by workers.

Some economists think that automation has had large effects on the US economy - some good and some bad. These effects may get stronger in the future.

⁶⁵We did not include this treatment arm in the AIC survey.

Please write a few sentences about this question: How do you think increased automation will affect employment in the future?

Figure A.12 and Figure A.13 show the estimated effects of the automation treatment on support for social investment and social assistance. As with the trade treatment, treatment increases support for social investment, though the effect is often statistically insignificant. The magnitudes of the coefficients are generally similar to those found from the trade treatment. As with the trade treatment, the effects are similar for Republicans and Democrats. The effect of the automation treatment on support for social assistance is generally more negative than the effect of the trade treatment.

We view this as initial, exploratory analysis. The narrative around automation is changing rapidly, in part because technological shifts are happening at astonishing speeds. The full effects of automation on dislocation are yet to be realized. It is possible that automation will also trigger a narrative about unfairness, albeit with capital- and tech-heavy corporations "to blame" instead of foreign workers. If so, that may further drive support for social investment.

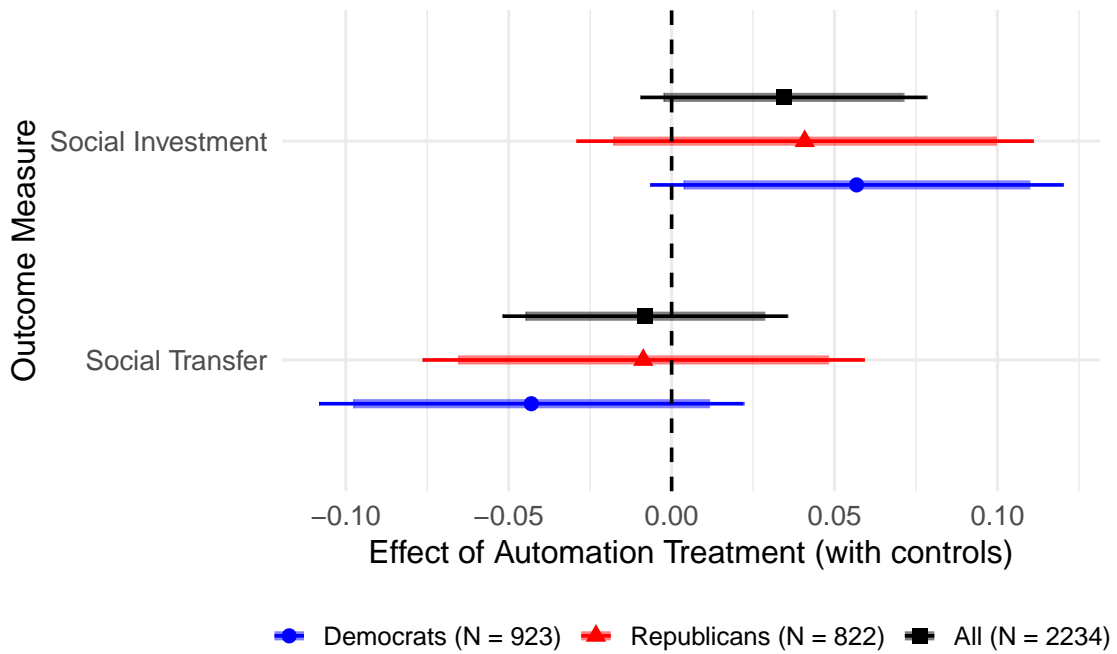


Figure A.12: Effect of Automation Treatment on Outcomes, no controls

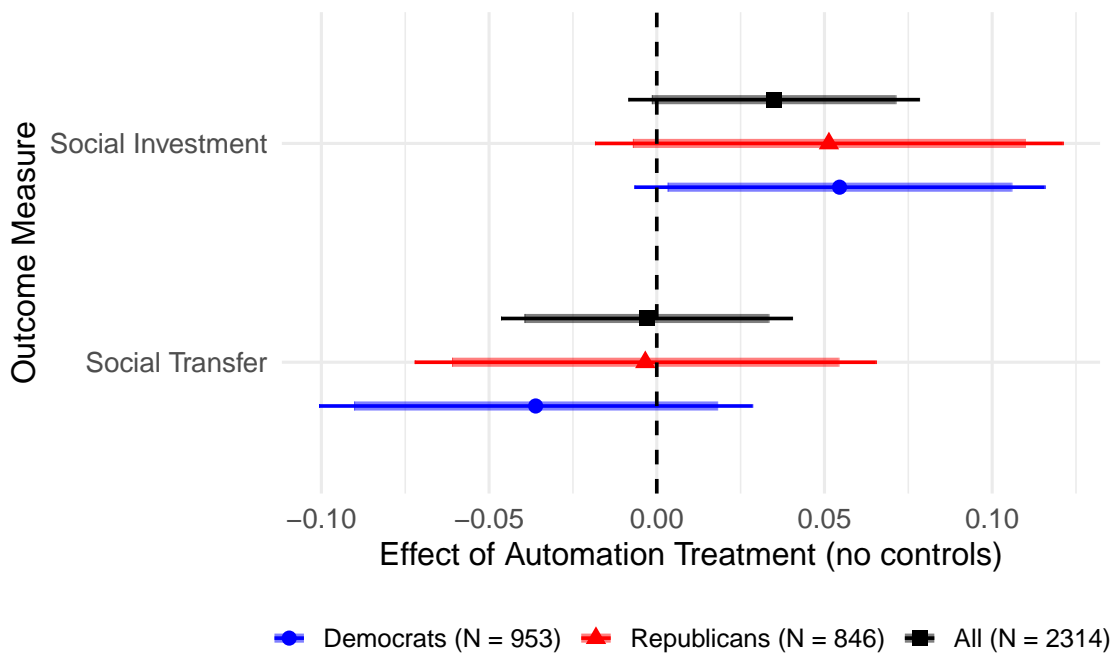


Figure A.13: Effect of Automation Treatment on Outcomes, with controls

Appendix Only References

Chaudoin, Stephen, Jude Hays and Raymond Hicks. 2018. “Do we really know the WTO cures cancer?” *British Journal of Political Science* 48(4):903–928.

Cinelli, Carlos and Chad Hazlett. 2020. “Making sense of sensitivity: Extending omitted variable bias.” *Journal of the Royal Statistical Society Series B: Statistical Methodology* 82(1):39–67.

Hansen, Ben B and Jake Bowers. 2008. “Covariate balance in simple, stratified and clustered comparative studies.” *Statistical Science* pp. 219–236.